

Kevin Francis Ceramics
Face Pots



The American Toby Jug Museum

Kevin Francis Ceramics

Face Pots

Version A.1
October 2023

This e-book is a living document. It will be revised and re-issued periodically, incorporating updated information, adding new photos, and expanding the knowledge of Kevin Francis Ceramics face pots through generous contributions of the collecting community.

Any collector, dealer, auction house, museum, or other individual or organization wishing to contribute to this publication, please e-mail information and photographs to: americantobyjugmuseum@gmail.com.

Contributors will be recognized for the information they share.

The authors may be contacted at:

The American Toby Jug Museum
910 Chicago Avenue, Suite 105
Evanston, Illinois 60202

Telephone: 312-731-1852 e-mail: americantobyjugmuseum@gmail.com

Copyright 2023 by the American Toby Jug Museum, Kevin Pearson and David C. Fastenau.

All rights reserved. No part of this work may be reproduced or used in any form or by any means—graphic, electronic, or mechanical, including photocopying or information storage and retrieval systems—without written permission from the authors and the American Toby Jug Museum. The scanning, uploading and distribution of this e-book or any part thereof via the Internet or via any other means without permission of the authors is illegal and punishable by law. Please share only authorized editions and do not participate in or encourage the electronic piracy of copyrighted materials.

Front Cover Photo: Upper row, left to right: President Jimmy Carter, Cecil The Squire, Bones, Bunny, and Santa version 5
Lower row, left to right: Henry VIII, The Wizard version 2, and Count Dracula



Origin & Development of the Face Pot



A selection of Face Pots

Upper row, left to right: Caesar, Cleopatra, and Groucho Marx

Lower row, left to right: Charlie Chaplin, Santa version 2, and Charles Dickens

Kevin Francis Ceramics developed the face pot concept in 1999 and introduced them to the public in 2000 with the release of four characters: John Lennon, Bertie Bulldog, Winston Churchill, and Salvador Dali.

The original concept was to combine an English Toby jug with a Japanese netsuke, producing a small lidded pottery box that could fit in the palm of your hand. Further development led to the inclusion of a printed quote inside the base. These quotes ranged from actual quotes made by or about the characters portrayed to imaginary and comical quotes related to the character, usually in cases where there was not much real material available as in most of the animals.

Much like historical Toby jugs, subject matters were chosen from a wide range of historical and current characters, and in many ways reflected the particular interests and admirations of the face pot development team, perhaps most notable in the choice of the rock star face pots. Kevin Pearson's own experience in producing Toby jugs since 1987 through Kevin Francis Ceramics also came into play with the inclusion of several popular Kevin Francis Toby jug characters such as Winston Churchill, Clarice Cliff and British Bulldogs.

Prototypes

Prototype face pots and Artist Editions with gold back stamps are the most sought after and rarest of all the face pot releases. They range from early trials to special one-off themed pieces, all marked with distinctive gold stamps. Produced for both marketing and production purposes, many were sold at exclusive collector events while others were used as special prizes and charity auction pieces.



The prototype gold back stamps were used for all the early color trials prior to selecting the final production version. Most of these face pots were not as complex in paint styles as Artist Editions, being designed for commercial production. There would usually be four to five initial different prototype designs that would get narrowed down to one when approved for production. However a prototype stamp was also occasionally used for Artist Edition designs, especially prior to the introduction of the Artist Edition stamp in 2003, limited theme releases, and some rather expensive and complicated trials which could never be produced economically. There were also a few pieces produced with a black prototype back stamp among the very first releases, but this was discontinued in early 2001.

Artists Edition

First introduced in 2003, Artists Editions were also given a gold back stamp. As the name implies, Kevin Francis painters were given free rein to come up with the most colorful, imaginative, and/or humorous design possible. Quite often themes arose such as bathing suit Berties, drag queen Frankensteins in 2003, and pirate and Halloween themes. Most Artists Editions were only released for special collector events and tours. The complexity of the painters' approach is clearly evident in the final result and there is an incredible divergence of styles and approaches across all the Artists Editions. One face pot, Nelson Mandela, was only released in fifty Artists Editions in 2011.



Flambé

Introduced in 2006, some prototypes were produced in a vibrant red flambé finish. The flambé pieces were produced through a complicated, inefficient and expensive firing procedure involving several interesting ingredients being added to the kilns during various firings. After much experimentation, the Peggy Davies Studio perfected its flambé process which they called Ruby Fusion. Due to the nature of the special kiln preparation work required and the resulting total disruption of normal production processes, very few face pots were produced in the flambé finish. For those flambé face pots that were produced, there were a maximum of three each made, all of which carry the gold prototype stamp.



Face Pot Collectors Club

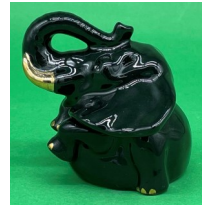


A Face Pot Collectors Club was established that offered Annual Guild colorways in strictly limited releases of up to 100 pieces and bearing gold backstamps. The Collectors Club exclusive colorways were offered for only three years. Each year Club members could select two Club pieces from among approximately ten different issues offered. This selection process resulted in some highly skewed numbers in favor of certain old favorites as well as many surprisingly small edition numbers in others.

Face pots are a unique collectible with wide appeal that benefitted from a surge in collecting in the late 1990s when there was an eager market for new collectibles and a large number of collectible retailers to distribute through. Overall, 197 different face pot characters were created totaling 567 releases including prototypes, Artists Editions, special editions, and commissions. Over 78,000 individual face pots were produced with approximately 95% of them being sold in the United States.



Two of the most popular face pot characters, Bertie the Bulldog and Nelly the Elephant, were collectively released in more colorways and variations than any other and are particularly sought after in any prototype or Artists Edition. Face pots continue to be produced, albeit with fewer new releases per year. The secondary collectible market for face pots remains strong.



Kevin Francis Ceramics



Founded in 1988 by Kevin Pearson and Francis Salmon in Stoke, England, Kevin Francis Ceramics was committed to producing the highest quality toby and character jug designs in limited editions. To assure the top quality of well conceived and produced collectibles, Kevin Francis utilized the talents of many well-respected designers and modelers in the English pottery industry.



The company's first character jugs were the Collecting World Series of three character jugs designed by Geoff Blower and issued by Royal Doulton. Its next releases were a series of five toby jugs designed by Peggy Davies and produced by Peggy Davies Ceramics. Business grew quickly and in 1992 the company expanded into other high quality ceramics including wall masks, figurines and vases. Face pots were introduced in 2000 and continue to be designed and produced today.



Abagael

Abagael face pot produced circa 2001. Abagael is a cuddly black Cocker Spaniel. With her darling expression and wearing her blue collar with red tag, she is charming her master for treats. Abagael's expression and behavior clearly answer the question of "Am I cute or what" found inside the face pot.



Albert Einstein

Albert Einstein face pot modeled by Ray Noble and circa 2001. Albert Einstein (1879-1955) was a German-born theoretical physicist, widely acknowledged to be one of the greatest and most influential physicists of all time. Einstein is best known for developing the theory of relativity, but he also made important contributions to the development of the theory of quantum mechanics. His mass energy equivalence formula, $E = mc^2$, has been dubbed "the world's most famous equation" and can be found on the inside of the face pot.



Alfred

Alfred face pot produced circa 2002. Alfred is a Beefeater, or Yeomen of the Guard, who were the first permanent Royal Guard formed at Henry VII's coronation in 1485. The Yeoman of the Guard are responsible for guarding the Tower of London. Alfred's message inside the face pot quotes Edgar Allen Poe's poem *The Raven*: "Quoth the raven, never more". The Ravens of the Tower of London are a group of captive ravens resident at the Tower of London whose presence is believed to protect the Crown and the Tower.



Ariel

Ariel face pot modeled by Andy Moss and produced circa 2001. Princess Ariel is the titular protagonist of Disney's 1989 animated feature film *The Little Mermaid*. She is the seventh and youngest daughter of King Triton and Queen Athena, rulers of the undersea kingdom of Atlantica. Ariel's face pot quote of "Beware the Siren's Song" has been a warning to sailors since the days of Odysseus, who was so worried about the allure of the siren's song, he put wax in his shipmates' ears and had himself tied to his ship's mast.



Aslan

Aslan face pot modeled by Andy Moss and produced circa 2001. Aslan is a major character in C. S. Lewis' *The Chronicles of Narnia* series. Aslan is depicted as a talking lion and is described as the King of Beasts, the son of the Emperor-Over-the-Sea, and the King above all High Kings in Narnia. The word "aslan" means lion in Turkish. Aslan's face pot quote, "Their prison is only in their minds", was said by Aslan about the dwarves in the book *The Last Battle*.



Bald Eagle

Bald Eagle face pot modeled by Andy Moss and produced circa 2003. The bald eagle is a bird of prey found in North America. The bald eagle is the national symbol of the United States and appears on its seal. The quote "United We Stand" inside the face pot is a phrase used in many different kinds of mottos to inspire unity and collaboration. Use of this motto in the United States dates back to the Founding Fathers and the 1770s.



Barack Obama

prototype

general issue

Barack Obama face pot modeled by Ray Noble and produced circa 2008. Barack Hussein Obama II (1961-) is an American politician who served as the 44th president of the United States from 2009 to



2017. A member of the Democratic Party, he was the first African-American president of the United States. Obama previously served as a U.S. senator from Illinois from 2005 to 2008 and as an Illinois state senator from 1997 to 2004. Obama was the 2009 winner of the Noble Peace Prize. The face pot quote "Americans ...still believe in an America where anything's possible - they just don't think their leaders do." was made by Obama during his Presidency.

Baroness Thatcher

Baroness Thatcher face pot produced circa 2002. Margaret Hilda Thatcher (1925-2013) was Prime Minister of the United Kingdom from 1979 to 1990 and Leader of the Conservative Party from 1975 to 1990. She was the first female British prime minister and the longest-serving British prime minister of the 20th century. The face pot quote "I usually make up my mind about a man in ten seconds, and I very rarely change it." is one of Thatcher's more famous.



Basset Hound

Basset Hound face pot produced circa 2003. The Basset Hound is a short-legged breed of dog in the hound family. The Basset Hound is a friendly, outgoing, and playful dog, good with children and other pets. They are extremely vocal and famously devoted to tracking. Prospective owners must be prepared to handle Bassetts firmly and patiently. Exuding a loving feeling with his face pot question of "Are you looking for unconditional love?", this Basset is a family dog ready to give unconditional love to his people.

Benny Hill

Benny Hill face pot produced circa 2001. Alfred Hawthorne "Benny" Hill (1924-1992) was an English comedian, actor, singer and writer. He is remembered for his television program *The Benny Hill Show*, an amalgam of slapstick, burlesque and double entendre that included live comedy and filmed segments, with Hill at the focus of almost every segment. His show was among the most-watched programs in the UK, and his audience was more than 21 million in 1971. The face pot quote "Do unto others, then run." was one of Hill's recurring lines.



Bernard the Blue Whale

Bernard the Blue Whale face pot modeled by Andy Moss and produced circa 2003. The blue whale is a marine mammal and a baleen whale. Reaching a maximum length of 100 feet and weighing up to 200 tons, it is the largest animal known ever to have existed. After centuries of over hunting and being an endangered species, Bernard has a message for man and his selfish ways, spouting off "Go hunt yourself!" as found inside the face pot.



Bertie

Bertie face pot produced in a variety of colorways circa 2000-2001. Bertie the bulldog is a British breed of mastiff dog that are medium sized, muscular dogs featuring large heads with a thick folds of skin around the face and shoulders. While often used as a symbol of ferocity and courage, bulldogs are generally friendly, amiable dogs. With his face pot quote of "Woof, Woof", Bertie is telling his master that it is time for their evening walk.



Beth

Beth face pot prototype blue trial colorway produced in 2001. Beth is a witch, a person thought to have magic powers, especially evil ones. Witches are popularly depicted as women wearing a black cloak and pointed hat, and flying on a broomstick. Beth's face pot quote, "Fair is foul, and foul is fair: Hover through the fog and filthy air", says one of the three the Weird Sisters to Macbeth in the opening lines of William Shakespeare's play *Macbeth*.



Blackbeard

Blackbeard face pot produced circa 2006. Edward Teach (1680-1718), better known as Blackbeard, was an English pirate who operated around the West Indies and the eastern coast of the North American colonies. Joining Captain Hornigold's crew 1716, Teach was placed in command of a captured sloop and the two engaged in numerous acts of piracy. One of Blackbeard's famous quotes included in this face pot, "Only the devil and I know the whereabouts of my treasure, and the one of us who lives the longest should take it all.", boasts of how well he hid his vast wealth, which remains undiscovered to this day.

Bluebird

Bluebird face pot produced 2006. Bluebirds are a North American group of medium-sized, mostly insectivorous or omnivorous birds in the order of Passerines of the thrush family. Bluebirds have blue, or blue and rose beige, plumage. Female birds are less brightly colored than males, although color patterns are similar and there is no noticeable difference in size. In his face pot quote, this angry bluebird tweets "Bugger off" to any and all who bother him.





Bob Marley

Artists Edition

general issue

Bob Marley general issue face pot at right produced circa 2011. Robert Nesta Marley (1945-1981) was a Jamaican singer, musician, and songwriter. Considered one of the pioneers of reggae, his musical career



was marked by fusing elements of reggae, ska, and rocksteady, as well as his distinctive vocal and songwriting style. Marley's contributions to music increased the visibility of Jamaican music worldwide, and made him a global figure in popular culture. He is also considered a global symbol of Jamaican music and culture and identity, and was controversial in his outspoken support for democratic social reforms. One of Marley's famous quotes is "In this bright future, you can't forget the past." Remade into this face pot's quote "In this bright future, you can forget the past.", perhaps this face pot has smoked a bit too much Jamaican Dream Strain.

The 2011 Artists Edition at left above was a limited edition of 7. Its face pot quote, "No woman no cry.", is a reggae song by Bob Marley and the Wailers. The song was recorded in 1974 and released on the studio album *Natty Dread*. The royalty payments from the song were donated to a friend of Marley's who ran a soup kitchen in Trenchtown in order to keep the kitchen operating.



Bones

prototype colorways

general issue

Bones face pot produced circa 2006 at right with two prototype colorways at left. Animated skeletons are eerily symbolic reminders of the otherworld, death, and human mortality. Bones' face pot quote, "It's life Jim, but not as we know it", is a line from the original *Star Trek* TV series where Spock observes an unknown lifeform and makes this report to Captain Kirk. The same statement is true of animated skeletons and other undead creatures.

Bones 2006 flambé colorway face pot at right produced in a 2006 limited edition of 75. Bones' face pot quote, "Let's shake, rattle and roll!", are lyrics from the 1954 song *Shake, Rattle and Roll*. The song is about dancing and having a good time, these lyrics especially appropriate for a dancing collection of bones.



Boy George

Boy George face pot produced circa 2003. George Alan O'Dowd (1961-), known professionally as Boy George, is an English singer, songwriter, DJ and lead singer of the English new wave band Culture Club. He began his solo career in 1987. As a solo artist, Boy George has released nine studio albums, five compilation albums and forty-eight singles. Boy George's face pot quote is "Oh Boy!"

British Bobby

British Bobby face pot modeled by Andy Moss and produced circa 2001. A British Bobby, a slang term for a member of London's Metropolitan Police, is derived from the name of Sir Robert Peel, who established the police force in 1829. Police officers in London are also known as "peelers" for the same reason. The face pot quote of "Ello, ello, ello? What's going on here then?" is a question that a stereotypical London policeman of modest education around 1900 might pose to a small crowd that has gathered for no immediately discernible purpose.



Bruce

Bruce face pot modeled by Andy Moss and produced circa 2001. Bruce the koala is an arboreal herbivorous marsupial native to Australia. The koala is found in coastal areas of the mainland's eastern and southern regions, inhabiting Queensland, New South Wales, Victoria, and South Australia. It is easily recognizable by its stout, tailless body and large head with round, fluffy ears and large, spoon-shaped nose. Bruce's face pot quote, "Giddy Mate", is a common Australian greeting among friends and acquaintances.



Buddha

Buddha face pot produced circa 2002. Siddhartha Gautama was a wandering ascetic and religious teacher who lived in South Asia during the 6th or 5th century BCE and founded Buddhism. Centuries after his death, he came to be known by the title Buddha, which means "Awakened One" or "Enlightened One." Buddha's face pot quote "He is able who thinks he is able." are wise words that remind us that we all have potential inside and that our strength lies in believing in ourselves. With faith in ourselves and determination, we can achieve anything.



Buddy Holly

Buddy Holly face pot produced circa 2001. Charles Hardin Holley (1936-1959), known as Buddy Holly, was an American singer and songwriter who was a pioneering figure of mid-1950s rock and roll. Holly's style was influenced by gospel music, country music, and rhythm and blues acts. He is often regarded as the artist who defined the traditional rock-and-roll lineup of two guitars, bass, and drums. Holly's face pot quote, "That will be the day", is the title of a song written by Buddy Holly and first recorded in 1956.



Caesar

Caesar face pot produced circa 2002. Gaius Julius Caesar (100 BC-44 BC) was a Roman general and statesman. A member of the First Triumvirate, Caesar led the Roman armies in the Gallic Wars before defeating his political rival Pompey in a civil war, and becoming dictator from 49 BC until his assassination in 44 BC. He played a critical role in the events that led to the rise of the Roman Empire. Caesars' face pot quote, "Men willingly believe what they wish", is one of his more famous quotes.



Candy

Candy face pot produced circa 2002. Candy is a sweet caramel colored pony that loves children. She is known to be "as sweet as sugar" by all those who ride her as her face pot quote says.



Carnival Nellie

Carnival Nellie face pot produced in a 2003 limited edition for the Rosemont Team Tour. Carnival Nellie is among the largest existing land animals. Distinctive features of elephants include a long proboscis called a trunk, tusks, large ear flaps, pillar-like legs, and tough but sensitive skin. The trunk is used for breathing, bringing food and water to the mouth, and grasping objects. Tusks, which are derived from the incisor teeth, serve both as weapons and as tools. Carnival Nellie's face pot quote, "All the fun of the fair!" expresses her sentiment as a principal carnival performer.



Cecil The Squire

Cecil The Squire face pot produced circa 2001. A well-to-do lord of his manor, Cecil has a small estate in the country and handful of dedicated servants to care for it. His favorite activity is riding one of the well-bred horses from his stables. Cecil's favorite expression is the face pot quote, "Morning chops", referring to his daily morning chore and exercise routine. Its much more than just a delicious breakfast.



Charles

Charles face pot modeled by Ray Noble and produced circa 2002. Charles the chimpanzee is a species of great ape native to the forest and savannah of tropical Africa. Nearly all chimpanzee populations have been recorded using tools, modifying sticks, rocks, grass and leaves and using them for hunting and acquiring honey, termites, ants, nuts and water. While chimpanzees have a fun loving reputation, Charles' face pot quote, "One's not just monkeying around", shows how serious and sophisticated chimps can be.



Charles Dickens

Charles Dickens face pot produced circa 2003. Charles Huffham Dickens (1812-1870) is regarded as England's greatest popular novelist of the 19th century. His writing career began in 1836 with the creation of the immensely popular Mr. Pickwick. Dickens' characters were diverse and colorful, his works filled with spirited humor and satirical wit, carrying themes reflecting his own experiences and hardships. The face pot quote "I will live in the past, the present, and the future." was said by Ebenezer Scrooge at the end of Dickens' *A Christmas Carol* and has proven to be true of Dickens' works.



Charlie Chaplin

Charlie Chaplin face pot produced circa 2001. Charles Spencer Chaplin (1889-1977) was an English comic actor, filmmaker, and composer who rose to fame in the era of silent film. He became a worldwide icon through his screen persona, the Tramp, and is considered one of the film industry's most important figures. His career spanned more than 75 years. With his face pot quote, "A day without laughter is a day wasted", Chaplin tells people that when you laugh, you change and when you change, the whole world changes around you and it turns magical.

Charter Collector Teddy

Charter Collector Teddy face pot produced 2000. A teddy bear is a stuffed toy in the form of a bear. Developed in the early 20th century, the teddy bear, named after President Theodore Roosevelt, became a popular children's toy and has been celebrated in story, song, and film. Charter Collector Teddy was available only to charter members of the face pot collecting guild. Charter's face pot quote, borrowed from Elvis Presley, "Thank you, thank you very much", expresses his appreciation for the charter members joining the guild.



Christmas Angel

Christmas Angel face pot produced circa 2001. Angels in art are usually shaped like humans of extraordinary beauty. They are often identified in Christian artwork with bird wings, halos, and divine light. They are also an integral part of Christian Christmas celebrations. The angel's face pot quote, "Everytime the bell rings", is from the Christmas movie *It's a Wonderful Life* where ZuZu Bailey says, "Look daddy, teacher says, every time a bell rings an angel gets his wings."



Churchill

Churchill face pot produced circa 2000. Widely considered one of the 20th century's most significant figures, Winston Spencer Churchill (1874-1965) was a British statesman, soldier, and writer who served as Prime Minister of the United Kingdom from 1940 to 1945, during the Second World War, and again from 1951 to 1955. Churchill's face pot quote, "We shall never Surrender", is from his famous "We shall fight on the beaches" speech delivered by the Prime Minister to the House of Commons of the Parliament on June 4, 1940.



Clarice Cliff

Clarice Cliff face pot produced circa 2001. Clarice Cliff (1899-1972) was an English ceramic artist and designer. At the A. J. Wilkinson factory Cliff developed her skills as an artist and began decorating some of the old defective ware in her freehand patterns in her spare time. She used on-glaze enamel colors which enabled a brighter palette than underglaze colors. She called this style 'Bizarre' which quickly became popular. Clarice's face pot quote, "And you think this is bizarre?", refers to her popular style of décor.



Claw the Sabre Tooth

Claw the Sabre Tooth face pot produced circa 2001. A saber tooth is any member of various extinct groups of predatory carnivorous mammals characterized by long, curved saber-shaped canine teeth. One of the best-known is the saber toothed tiger, although they are not closely related to tigers. Living in matriarchal prides, this female saber tooth is known as the Queen of the Clan as her face pot quote proclaims.

Cleopatra

Cleopatra face pot produced circa 2003. Cleopatra VII Thea Philopator (70 BC -30 BC) was Queen of the Ptolemaic Kingdom of Egypt from 51 to 30 BC, and its last active ruler. After Cleopatra's death, Egypt became a province of the Roman Empire, marking the end of the last Hellenistic period state. "Give me my robe, put on my crown; I have / Immortal longings in me" is the beginning of Cleopatra's final speech in Shakespeare's tragedy *Antony and Cleopatra*, as well as her face pot quote.





Club Franky

Club Franky face pot produced as the 2002 Guild issue. *Frankenstein* is an 1818 novel written by English author Mary Shelley that tells the story of Victor Frankenstein, a young scientist who creates a sapient creature in an unorthodox scientific experiment. Intelligent and articulate, the Creature relates his first days of life, living alone in the wilderness. Showing his gentle side, Club Franky is holding a bunny and asking "Who's your Daddy?", possibly wondering who his daddy was.

Clyde

Clyde face pot produced circa 2002. In the 1978 movie *Every Which Way But Loose*, Philo Beddoe, played by Clint Eastwood, is an easy-going trucker and a great fist-fighter. With two friends, Orville, who promotes prize-fights for him, and Clyde the orangutan he won on a bet, he roams the San Fernando Valley in search of cold beer, country music, and the occasional fight. "Are you feeling lucky today?" is a famous Clint Eastwood quote from another movie *Dirty Harry*.



Comical Ali

Comical Ali face pot produced circa 2003. Mohammed Saeed al-Sahhaf is an Iraqi diplomat and politician who served as Minister of Foreign Affairs from 1992 to 2001. During the 2003 invasion of Iraq he was the Minister of Information under Iraqi President Saddam Hussein. He was nicknamed Comical Ali for his notable and colorful television appearances where he commonly made outlandish claims. Ali's face pot quote, "We are winning", was a typical refrain of his mis-information.

Congo

Congo face pot produced in 2002 for the Gorilla Foundation. Gorillas are herbivorous, predominantly ground-dwelling great apes that inhabit the tropical forests of equatorial Africa. They tend to live in troops, with the alpha male leader being called a silverback. Congo's face pot quote, "Turn not away, lest yourself you recognize", is the last line of the poem *Willie B's Eyes* written by Dr. H. Dieter Steklis about the relationship between a gorilla and a man.



Count Dracula

prototype colorway

general issue

Count Dracula face pot produced circa 2004. *Dracula* is a 1897 novel by Bram Stoker. The story is related through letters, diary entries, and newspaper articles. It has no single protagonist, but opens with solicitor Jonathan Harker taking a business trip to stay at the castle of a Transylvanian nobleman, Count Dracula.



Harker escapes the castle after discovering that Dracula is a vampire, and the Count moves to England and plagues the seaside town of Whitby. A small group, led by Abraham Van Helsing, hunt Dracula and, in the end, kill him. Count Dracula is taunting people by screaming "Bite Me!" at them, the face pot quote.



Cowboy

Cowboy face pot produced circa 2007. A cowboy is an animal herder who tends cattle on ranches in North America, traditionally on horseback, and often performs a multitude of other ranch-related tasks. In addition to ranch work, some cowboys work for or participate in rodeos. This cowboy's face pot sings the famous lyric from the song *A Horse With No Name* by the band America, "I've been through the desert on a horse with no name."



David Bowie

David Bowie face pot produced circa 2002. David Robert Jones (1947-2016), known professionally as David Bowie, was an English singer-songwriter and actor. He is regarded as one of the most influential musicians of the 20th century, and was acclaimed by critics and musicians, particularly for his innovative work during the 1970s. Bowie is singing "Wham, Bam, Thank you, Ma'am", a lyric from his 1972 hit song *Suffragette City*.





David Winter

David Winter face pot produced circa 2001. David Winter (1958-) is an English sculptor known for collectible miniature buildings. Winter made his first cottage in 1979 with John Hine, and soon expanded, forming David Winter Cottages, which became popular for its small, collectible detailed cottages, some of which were rare. They were popular in the late 1980s and into the early 1990s. David is exclaiming "Cheers, make mine a pint!", a typical greeting in a pub from a proper English gent.

Diana, Princess of Wales

Diana, Princess of Wales face pot produced in a 2002 blue dress trial colorway. Diana Frances Spencer (1961-1997), was a member of the British royal family, the first wife of King Charles III and mother of Princes William and Harry. Her activism and glamour made her an international icon and earned her enduring popularity. The face pot quote, "Your candle's burned out long before your legend ever did.", is a poignant lyric from Elton John's 1997 tribute version of his hit *Candle in the Wind*.



Draco

Draco face pot produced circa 2001. A dragon is a large magical legendary creature that appears in the folklore of many cultures worldwide. Beliefs about dragons vary considerably through regions, but dragons in western cultures since the High Middle Ages have often been depicted as winged, horned, and capable of breathing fire. Known for whisking young maidens away to his lair, Draco the dragon is politely asking has "Anyone seen a fair maiden?" of some local villagers.

Elephant Stars and Stripes

Elephant Stars and Stripes face pot produced in a 2012 patriotic limited edition of 25. Distinctive features of elephants include a long proboscis called a trunk, tusks, large ear flaps, pillar-like legs, and tough but sensitive skin. The trunk is used for breathing, bringing food and water to the mouth, and grasping objects. Tusks serve both as weapons and as tools for moving objects and digging. This face pot quote, "A smile happens in a flash but its memory can last a lifetime.", is a quote from Bertrand Russell and is very appropriate for an animal with a long memory.



Elephant Union Jack

Elephant Union Jack face pot produced in 2012. Elephants are the largest existing land animals. Distinctive features of elephants include a long proboscis called a trunk, tusks, large ear flaps, pillar-like legs, and tough but sensitive skin. The trunk is used for breathing, bringing food and water to the mouth, and grasping objects. Tusks serve both as weapons and as tools for moving objects and digging. Said by Abraham Lincoln, this face pot's quote is "When you have an elephant by his tail and he is trying to run away, it's best to let him run."



Elian

Elian face pot produced in brown and black colorways circa 2001. Elian is a Portuguese Water Dog that originated in the Algarve region of Portugal. They were taught to herd fish into fishermen's nets, retrieve lost tackle or broken nets, and act as couriers from ship to ship, or ship to shore. Clearly having an obsession for water, Elian exclaims "Never mind walkies - let's swim!"



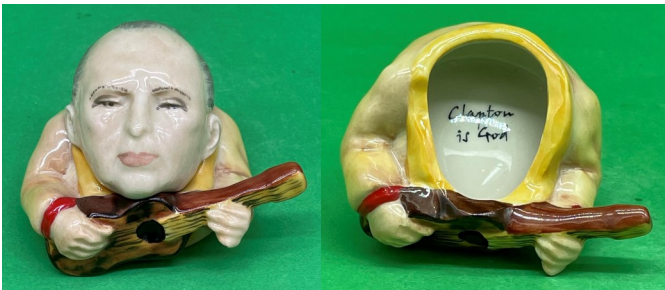


Elton John

prototype colorway

general issue

Elton John face pot produced circa 2002. Elton Hercules John (1947-) is a British singer, pianist and composer. Acclaimed by critics and musicians for his work in the 1970s and his lasting impact on the music industry. His songwriting partnership with lyricist Bernie Taupin is one of the most successful in history. Elton is singing, "I'm still standing ...", from his 1983 *Too Low For Zero* album.



Eric Clapton

Eric Clapton face pot produced in a 2001 Artist's Edition. Eric Patrick Clapton (1945-) is an English rock and blues guitarist, singer, and songwriter. He is regarded as one of the most successful and influential guitarists in rock music, ranking second in *Rolling Stone's* list of the "100 Greatest Guitarists of All Time". The face pot quote proclaims that "Clapton is 'God'", a graffiti sentiment spray-painted on a wall in London during the mid-1960s, launching the cult following of the guitar hero.

Eric

Eric face pot produced circa 2001. Eric is a Christmas elf who lives and works at the North Pole. A Christmas elf is a diminutive elf that lives with Santa Claus at the North Pole and acts as his helper. Christmas elves are usually depicted as green- or red-clad, with large, pointy ears and wearing pointy hats. Their primary responsibility is as toy builders, but they are also key to the daily operations at the North Pole. In this face pot, Eric is happily proclaiming that "Tis the season to be giving".



Evita

Evita face pot produced circa 2003. Maria Eva Duarte de Peron (1919-1952), better known as just Eva Peron or by the nickname Evita, was an Argentine politician, activist, actress, and philanthropist who served as First Lady of Argentina from June 1946 until her death in July 1952. *Evita*, the 1976 musical, is the story of her life, following her rise to power, charity work, and death. Evita is urging the people to "Don't cry for me". *Don't Cry For Me Argentina* is a song from the album and musical.



Fairy

Fairy face pot produced circa 2001. A fairy is a type of mythical being or legendary creature found in the folklore of multiple European cultures, a form of spirit, often described as metaphysical, supernatural, or preternatural. Various folk theories about the origins of fairies include casting them as either demoted angels or demons, as deities in Pagan belief systems, as spirits of the dead, or as spirits of nature. In this face pot, the fairy is singing "May all your Christmas wishes come true", a lyric from the song *Christmas Wishes*.

Fat Boy

Fat Boy face pot produced circa 2003. Joe, or the Fat Boy, is one of the inimitable characters depicted in the 1837 novel *The Pickwick Papers* by Charles Dickens. The servant of Mr. Wardle, his rotund form is no doubt due to his gargantuan appetite and somnolence, falling asleep at every opportunity. Eatables and drinkables are all that will raise the Fat Boy from his slumber. The face pot quote is "Only a single line for Joe". For Joe, more renowned for eating than speaking, the message reads with deliberate irony.



Field Marshall Montgomery

Field Marshall Montgomery face pot produced circa 2001. Field Marshal Bernard Law Montgomery (1887-1976) was a senior British Army officer who served in the First World War, the Irish War of Independence, and the Second World War. From 1948 to 1951, he served as Chairman of the Commanders-in-Chief Committee of the Western Union. Montgomery's famous saying, "Desert Rats never cough", refers to the skill and stealth of the Desert Rats, the nickname of the British 7th Armored Division who helped defeat the Germans in North Africa during World War II.

Flamingo

Flamingo face pot produced in a pink colorway in a 2006 limited edition of 225. A flamingo is a type of wading bird in the family Phoenicopteridae. A group of flamingoes is called a "flamboyance". Flamingos usually stand on one leg with the other tucked beneath the body but are also capable flyers. This flamingo's face pot message is "Intelligence without ambition is a bird without wings", meaning that without ambition, it doesn't matter how smart you are.



Florida Gator

Florida Gator face pot produced in a 2005 limited edition of 150 for Victorian Village and the 2005 Team Tour. An alligator, or gator, is a large reptile in the Crocodylia order of the family Alligatoridae. The name alligator is an anglicized form of el lagarto, the Spanish term for "the lizard", which early Spanish explorers and settlers in Florida called the alligator. Victorian Village is a neighborhood in Columbus, Ohio. The Victorian Village Historic District was established in 1973 to protect the unique architectural and historical features of the neighborhood.



Flower Power Nellie

Flower Power Nellie face pot produced circa 2003. Elephants are the largest existing land animals. Distinctive features of elephants include a long proboscis called a trunk, tusks, large ear flaps, pillar-like legs, and tough but sensitive skin. The trunk is used for breathing, bringing food and water to the mouth, and grasping objects. Tusks serve both as weapons and as tools for moving objects and digging. A true love child of the late 1960s, Flower Power Nellie is shouting the anti-war chant, "Make Love Not War".



Frankenstein

Frankenstein face pot produced in a 2002 limited edition gold colorway. *Frankenstein* is an 1818 novel written by English author Mary Shelley that tells the story of Victor Frankenstein, a young scientist who creates a sapient creature in an unorthodox scientific experiment. Intelligent and articulate, the Creature relates his first days of life, living alone in the wilderness. Showing his gentle side, Frankenstein is holding a bunny and saying "I'm coming to get you!"





Frank-N-Furter

Dr. Frank-N-Furter is the self proclaimed "sweet transvestite from Transsexual, Transylvania" and the main antagonist of the musical *The Rocky Horror Picture Show*. His main goal was to create a perfect man as his own plaything, which he does in the form of Rocky Horror. His face pot quote is not yet determined.

Fred the Druid

Fred the Druid face pot produced circa 2001. A druid was a member of the high-ranking priestly class in ancient Celtic cultures. Druids were religious leaders as well as legal authorities, adjudicators, lore keepers, medical professionals and political advisors. Druids left no written accounts. Fred the Druid was available only to charter members of the face pot collecting guild. Familiar with the stars and the ways of nature, Fred is wishing everyone a "Happy Solstice", a revered event of the druids.



Frog

Frog face pot produced circa 2003. This happy frog is sitting among the reeds waiting for his next meal to fly near him. He is asking all of the pretty young maids that pass by to "Give us a kiss", recalling that a Princess once kissed a frog and he turned into a handsome prince. Even if he does not turn in to a prince, receiving many kisses is always a good experience. Note the dragonfly on his tongue.

Ganusha

Ganusha face pot produced in a 2007 trial colorway. Ganesha, also spelled Ganusha, is one of the best-known and most worshipped deities in the Hindu pantheon. Although Ganusha has many attributes, he is readily identified by his elephant head. He is widely revered as the remover of obstacles and thought to bring good luck; the patron of arts and sciences; and the deva of intellect and wisdom. Ganusha's face pot quote, "An eye for an eye ends up making the whole world blind." was said by Mahatma Gandhi, meaning if we keep punishing those we deem cruel, then we're no better than they are.



Geisha Girl

Geisha Girl face pot produced circa 2007. Geisha are a class of female Japanese performing artists and entertainers trained in traditional Japanese performing arts styles, such as dance, music and singing, as well as being proficient conversationalists and hosts. Their distinct appearance is characterized by long, trailing kimono, traditional hairstyles and oshiroi make-up. This Geisha's face pot quote, "A mind troubled by doubt cannot focus on the course to victory.", is a quote from Arthur Golden's *Memoirs of a Geisha*.



General S. Patton

General S. Patton face pot produced circa 2002. George Smith Patton Jr. (1885-1945) was a general in the United States Army who commanded the Seventh United States Army in the Mediterranean Theater of World War II, and the Third United States Army in France and Germany after the Allied invasion of Normandy in June 1944. Towards the end of World War II, Patton confessed to his wife one month before V-E Day, "Peace is going to be hell on me", which is this face pot quote.

George Harrison

George Harrison face pot produced circa 2002. George Harrison (1943-2001) was an English musician and singer-songwriter who achieved international fame as the lead guitarist of the Beatles. Harrison embraced Indian culture and helped broaden the scope of popular music through his incorporation of Indian instrumentation and Hindu-aligned spirituality in the Beatles' work. George's face pot quote, "While My Guitar Gently Weeps", is the title of one of his most popular songs.



George Washington

George Washington face pot produced circa 2002. George Washington (1732-1799) was an American military officer, statesman, and Founding Father who served as the first president of the United States from 1789 to 1797. Washington has been called the "Father of his Country" for his manifold leadership in the formative days of the country. George's face pot quote, "Liberty, when it begins to take root, is a plant of rapid growth.", was written in a letter from Washington to James Madison in March of 1788.



Gill The Gecko

Gill The Gecko face pot produced circa 2005. Geckos are small, mostly carnivorous lizards that have a wide distribution, found on every continent except Antarctica and found in warm climates throughout the world. Geckos are unique among lizards for their vocalizations and loud mating calls. Gill the Gecko's cheeky face pot quote asks it's owner: "Would you like to tickle my scales?"



Golden Retriever

Golden Retriever face pot produced circa 2005. The Golden Retriever is a Scottish breed of retriever dog of medium size characterized by a gentle and affectionate nature and a striking golden coat. It is commonly kept as a pet and is among the most frequently registered breeds in several Western countries. The Golden Retriever is considered an intelligent, gentle natured and very affectionate breed of dog. This Golden's face pot quote, "Man's best friend", highlights its well-deserved reputation.



Grey Bertie

Grey Bertie face pot produced circa 2003. Bertie the bulldog is a British breed of dog of mastiff type. Bulldog's are a medium sized, muscular dog with large heads with a thick folds of skin around the face and shoulders. While often used as a symbol of ferocity and courage, modern bulldogs are generally friendly, amiable dogs. With her face pot quote of "It's not easy being a bitch", Grey Bertie is telling the world that being a female bulldog is not an easy life.



Groucho Marx

Groucho Marx face pot produced circa 2001. Julius Henry "Groucho" Marx (1890-1977) was an American comedian, actor, writer, singer, stage, film, radio, television star and vaudeville performer. He made 13 feature films as a team with his siblings the Marx Brothers and had a successful solo career. Groucho's face pot quote, "Quote me as saying I was mis-quoted", is one of his more notable.





H.R.H. The Queen Mother

H.R.H. The Queen Mother face pot produced 2001. Elizabeth Alexandra Mary, (1926-2022) was Queen of the United Kingdom from February 6, 1952 until her death in 2022. She was queen regnant of 32 sovereign states during her lifetime, 15 of them at the time of her death. Her reign of 70 years and 214 days was the longest of any British monarch. The Queen's face pot quote is, "Looking the East End in the eye", a derogatory statement suggesting the Royals are out of touch with the lives of the everyday English people.

Harold

Harold face pot produced circa 2001. The snowy owl is a large, white owl of the true owl family. Snowy owls are native to the Arctic regions of both North America and the Palearctic, breeding mostly on the tundra. It has a number of unique adaptations to its habitat and lifestyle, which are quite distinct from other extant owls. Most owls sleep during the day and hunt at night, but the snowy owl is often active during the day, especially in the summertime. Harold's face pot quote, "Nyctea scandiaca", is his scientific name.



Hedgehog

Hedgehog face pot produced circa 2007. A hedgehog is a spiny mammal. There are seventeen species of hedgehog found throughout parts of Europe, Asia, and Africa, and in New Zealand by introduction. Hedgehogs share distant ancestry with shrews and they have changed little over the last fifteen million years. Like many of the first mammals, they have adapted to a nocturnal way of life. Their spiny protection resembles that of porcupines. This hedgehog's sage advice in his face pot quote is to "Hedge Your Bets".



Helen of Troy

Helen of Troy face pot produced circa 2004. Helen of Troy was a figure in Greek mythology said to have been the most beautiful woman in the world. She was believed to have been the daughter of Zeus and Leda. She was married to King Menelaus of Sparta "who became by her the father of Hermione, and, according to others, of Nicostratus also." Her abduction by Paris of Troy was the most immediate cause of the Trojan War. Helen's face pot quote, "The face that launched a thousand ships", describes the fact that a massive war was mounted on her behalf, the Trojan War.

Henry VIII

Henry VIII face pot produced circa 2002. Henry VIII (1491-1547) was King of England from April 1509 until his death in 1547. Henry is best known for his six marriages. He initiated the English Reformation, separating the Church of England from papal authority. Henry is also known as the "father of the Royal Navy" as he increased its size from a few to more than 50 ships. Henry VIII's face pot quote, "Off with their heads", describes the brutal manner in which he had two of his wives executed.



Hindustan

Hindustan the lucky White Elephant face pot produced circa 2001. Elephants are considered symbols of success and good fortune. White elephants are extremely rare and therefore even more symbolic of good fortune. White elephants are especially revered in Thailand, where they are a symbol of royal power and are referred to as "auspicious elephants." It is said that the Buddha's mother dreamt of a white elephant before she gave birth to him. Hindustan's face pot quote is "Trump. Trump. Trump" referring to the loud sound he makes.

Honey

Honey face pot produced circa 2001. The brown bear is a large bear species found across Eurasia and North America. It is one of the largest living terrestrial members of the order Carnivora, rivaled in size only by its closest relative, the polar bear. The brown bear is recognized as a national and state animal in several European countries. With a special fondness for honey, Honey's face pot quote is "Mother natures recipe", which honey is often referred to as.



Horace The Hippopotamus

Horace The Hippopotamus face pot produced circa 2003. The hippopotamus, or hippo, is a large semiaquatic mammal native to sub-Saharan Africa. Its name comes from the ancient Greek for "river horse". Horace's face pot quote is "Got mud?", borrowed from the advertising campaign "Got Milk?", because taking a mud bath is one of any hippos happiest routines.



Horatio Nelson

Horatio Nelson face pot produced circa 2002. Horatio Nelson (1758-1805) was a British flag officer in the Royal Navy and regarded as one of the greatest naval commanders in history. His leadership, strategies and tactics brought about many decisive victories during the French Revolutionary and Napoleonic Wars. Nelson's face pot quote, "I really do not see the signal", refers to an 1801 incident during battle when the cautious Admiral Parker sent a signal to Nelson's forces ordering them to discontinue the action. When this order was brought to Nelson's attention, he lifted his telescope up to his blind eye, saying, "I have a right to be blind sometimes. I really do not see the signal," and his forces continued the attack.



Inspector Clouseo

Inspector Clouseo face pot produced circa 2002. Inspector Jacques Clouseau is a fictional character in Blake Edwards' farcical The Pink Panther series. He is portrayed by Peter Sellers in the original series as depicted in this face pot. Clouseau is an inept and incompetent police detective in the French Surete, whose investigations quickly turn to chaos. His absent-mindedness almost always leads to destruction of property. Clouseau's face pot quote, "Does yer dewg bite?", is a question asked by Clouseau in the 1976 film *The Pink Panther Strikes Again*.



James Dink

James Dink face pot produced circa 2003. A take off on the Ian Fleming character, James Bond, James Dink is an aspiring Special Agent who will likely never achieve his goal. The character of Dink was a fictional masseuse of the hotel Fontainebleau Miami Beach Hotel, playing a minor character and Bond girl, she appeared briefly in the 1964 James Bond film *Goldfinger*. James Dink's face pot quote, "The name is Dink ... James Dink", is a play on Special Agent 007 James Bond's famous introductory line.

Jesus

Jesus face pot produced circa 2003. Jesus (4 BC-AD 33), also referred to as Jesus Christ, was a first-century Jewish preacher and religious leader. He is the central figure of Christianity, the world's largest religion. Most Christians believe Jesus to be the incarnation of God, the Christ that is prophesied in the Hebrew Bible. Jesus' face pot quote is from the Gospel of John 6:35: "He who comes to me will never be hungry; He who believes in me will never be thirsty", referring to everlasting life through a faith in him.





Jimi Hendrix

Jimi Hendrix face pot produced circa 2003. James Marshall "Jimi" Hendrix (1942-1970) was an American guitarist, songwriter and singer. Although his career spanned only 4 years, he is widely regarded as one of the most influential electric guitarists in the history of popular music, and one of the most celebrated musicians of the 20th century. The Rock and Roll Hall of Fame describes him as "arguably the greatest instrumentalist in the history of rock music." Jimi's face pot quote, "Purple Haze", is a 1967 song by Hendrix.

John Bull

John Bull face pot produced circa 2003. John Bull is the national symbol of England who was first popularized as a patriotic figure in 1712 in pamphlets advocating the end of the war of the Spanish Succession. These were later republished as the *History of John Bull*, portraying the man as an honest, jolly, plain dealing, and hot-tempered farmer. By the 1800s, *Punch* cartoonist John Tenniel had transformed him into a dignified gentleman. In John Bull's face pot quote, "I'm a quintessential Englishman through and through", he describes himself quite accurately.



John F. Kerry

John F. Kerry face pot produced circa 2004. John Forbes Kerry (1943-) is an American attorney, politician and diplomat. He served as the first U.S. Special Presidential Envoy for Climate, the 68th United States secretary of state from 2013 to 2017, and represented Massachusetts in the United States Senate from 1985 to 2013. Kerry was the Democratic nominee for president of the United States in the 2004 election, losing to incumbent President George W. Bush. On July 29, 2004, John Kerry accepted the Democratic presidential nomination with a military salute and the declaration: "I'm John Kerry and I'm reporting for duty", which is the quote of this face pot.

John Lennon - version 1

John Lennon face pot version 1 produced circa 2001. John Lennon (1940-1980) played the rhythm guitar and was one of the Beatles' lead singers. Lennon and McCartney were responsible for many of the melodies and lyrics that quickly caught on and created a wave of hysteria called "Beatlemania". The group's creativity and versatility kept them at the top of the world's music scene for many years. The group split up in 1971 and Lennon had great success as a solo artist. The face pot quote, "All You Need Is Love", is a 1967 song written by John Lennon.



John Lennon - version 2

prototype colorway

general issue

John Lennon face pot version 2 produced circa 2001. John Lennon (1940-1980) played the rhythm guitar and was one of the Beatles' lead singers. Lennon and McCartney were responsible for many of the melodies and lyrics that quickly caught on and created a wave of hysteria called



"Beatlemania". The group's creativity and versatility kept them at the top of the world's music scene for many years. The group split up in 1971 and Lennon had great success as a solo artist. The face pot quote, "Life is what happens while you are busy making other plans", is a famous quote by Lennon.



John The Parrot

John The Parrot face pot produced 2003. Parrots are birds of the roughly 398 species found mostly in tropical and subtropical regions with the greatest diversity in South America and Australasia. One-third of all parrot species are threatened by extinction. Characteristic features of parrots include a strong, curved bill, an upright stance, strong legs, and clawed feet. Many parrots are vividly colored, and some are multi-colored. John's face pot quote, "It's not dead, It's just resting", was said by the pet shop owner to the dissatisfied customer regarding a Norwegian Blue parrot's health from Monty Python's Flying Circus 1969 *The Dead Parrot Sketch*.

Jules the Bison

Jules the Bison face pot produced circa 2001. The American bison and the European bison are the largest surviving terrestrial animals in North America and Europe. They are similar in appearance to other bovines such as cattle and true buffalo. They are broad and muscular with shaggy coats of long hair and are nomadic grazers that travel in herds. The bulls leave the herds of females at two or three years of age, and join a herd of males. Located in Hays, Kansas, "Monarch of the Plains" is a 1967 limestone sculpture by artist Pete Felten depicting an American bison.



Kenny Talklong

Kenny Talklong face pot produced in a 2003 prototype trial colorway. Kenny Talklong is the stage name of a fictitious Elvis Presley impersonator. A pair with Reginald Shortduck, an Elvis impersonator performing in Stoke, England, Kenny is singing *Chicago Roles* to a local audience in a small neighborhood sports bar.

Killer Clown version 1

Killer Clown face pot version 1 prototype produced in 2023. The killer clown is a subversion of the traditional comic clown character in which the playful trope is instead depicted in a more disturbing nature through the use of horror elements and dark humor. This Killer Clown is wielding a chainsaw, threatening to injure or kill unsuspecting victims. His face pot quote, "Nobody likes a clown at midnight", is from Stephen King, the undisputed king of horror.



Killer Clown version 2

Killer Clown face pot version 2 prototype produced in 2023. The killer clown is a subversion of the traditional comic clown character in which the playful trope is instead depicted in a more disturbing nature through the use of horror elements and dark humor. This Killer Clown is hiding a hatchet and knife behind his back, prepared to attack his next victim. His face pot quote, "Send in the Clowns", is a Sondheim song from *A Little Night Music* that means things aren't going well so change things around, this Killer Clown is happy to oblige.



King Richard The Lion Heart

King Richard The Lion Heart face pot produced as the 2006 Guild Issue. Richard I (1157-1199) was King of England from 1189 until his death in 1199. He is known as Richard the Lionheart due to his reputation as a great military leader and warrior. He remains one of the few kings of England remembered more commonly by his epithet than his regnal number. "Once more into the breach, dear friends" is a quote from Shakespeare's play *Henry V* where Henry exhorts his forces to drive through the Harfleur town walls.



general issue

Lady Vampire

prototype color trial

Lady Vampire face pot produced circa 2005. A female vampire is a mythical creature that subsists by feeding on the blood of the living. In European folklore, vampires are undead creatures that often visited loved ones and caused mischief or deaths. They wore shrouds and were often described as bloated and of ruddy or dark countenance, markedly different from today's gaunt, pale vampire which dates from



the early 19th century. Vampires were popularized in Western Europe after reports of an 18th-century mass hysteria of a pre-existing folk belief in Southeastern and Eastern Europe that in some cases resulted in corpses being staked and people being accused of vampirism. The general issue Lady Vampire's face pot quote, "The next bite's on me.", is indicative of her blood thirsty desires. The prototype color trial Lady Vampire's face pot quote, "I never knew what life was until it ran out in a red gush over my lips, my hands!", is a quote from Anne Rice, author of *Interview with the Vampire*.



Lenny

Lenny the Labrador face pot produced circa 2001. The Labrador Retriever, or simply Labrador, is a British breed of retriever dog developed in the United Kingdom from fishing dogs imported from Newfoundland and named after the Labrador region there. The Labrador is friendly, energetic, and playful, bred as a sporting and hunting dog, but is widely kept as a companion dog. It may also be trained as a guide or assistance dog, or for rescue or therapy work. Lenny's face pot quote, "Here Boy", is one of the best things that Lenny likes to hear.



Lewis

Lewis the Tortoise face pot produced circa 2006. Tortoises are reptiles of the family Testudinidae. The shell in tortoises is generally hard and they retract their necks and heads directly backward into the shell to protect themselves. Tortoises can vary in size ranging from a few inches in length to four feet. Lewis' face pot quote, "They called him tortoise because he taught us", is a quote from *Alice's Adventures in Wonderland* when the Mock Turtle is explaining about his old teacher.

Lexie The Yorkie

Lexie The Yorkie face pot produced circa 2003. The Yorkshire Terrier is a British breed of toy dog of terrier type. It is among the smallest of the terriers and indeed of all dog breeds. It originated in the nineteenth century in the English county of Yorkshire, for which it is named. Their coats are typically tan on the head with a dark steel-grey body, but they can come in a variety of colors. It is a playful and energetic dog, usually kept as a companion dog. Lexie's face pot quote is "Did someone say Hot Dogs!" It must be close to dinner time and Lexie is hungry.



Madison

Madison face pot produced circa 2001. Madison is the mermaid in the 1984 romantic comedy *Splash*. Madison and Allen first meet as children when Allen jumps overboard. Years later, Madison saves Allen's life and then Allen joins Madison in the underwater world where they get married in a Neptune Ceremony. Madison's face pot quote, "Beware the Sirens Song", has been a warning to sailors since the days of Odysseus. "No Siren Did Ever So Charm The Ear Of The Listener, As The Listening Ear Has Charmed The Soul Of The Siren." - Henry Taylor

Mama Mia

Mama Mia face pot produced 2002. Mama Mia is a panther and new mother, gently holding her cub in her mouth. The panther is a large, long-tailed cat with a great deal of color variation ranging from pale brown or rusty upper parts, to dull white or buffy under parts. The tail tip, back of ears, and sides of nose are dark brown or blackish. Mama is certain to be an amazing mother.



Margaret Thatcher

Margaret Thatcher face pot produced circa 2003. Margaret Hilda Thatcher (1925-2013) was Prime Minister of the United Kingdom from 1979 to 1990 and Leader of the Conservative Party from 1975 to 1990. She was the first female British prime minister and the longest-serving British prime minister of the 20th century. The face pot quote, "Being powerful is like being a lady. If you have to tell people you are, you aren't.", is one of Thatcher's more famous.



flambé colorway

Marilyn Monroe

Marilyn Monroe face pot produced circa 2001. Marilyn Monroe (1926-1962), born Norma Jeane Mortenson, was an American actress famous for playing comedic "blonde bombshell" characters. She became one of the most popular sex symbols of the 1950s and early 1960s, as well as an emblem of the era's sexual revolution. Marilyn's face pot quote, "Ooh Mister President", recalls the most famous birthday ballad of all time where Marilyn took the stage to serenade President John F. Kennedy.



general issue

Mark Anthony

Mark Anthony face pot produced circa 2001. Marcus Antonius (83 BC-30 BC) was a Roman politician and general who played a critical role in the transformation of the Roman Republic from a constitutional republic into the Roman Empire. Antony had a love affair with Cleopatra, who bore him three children. Ongoing hostility erupted into civil war in 31 BC as the Roman Senate declared war on Cleopatra and proclaimed Antony a traitor. Antony and Cleopatra fled to Egypt where being defeated they committed suicide. Anthony's face pot quote is "He wears the rose of youth on him".



Marlene Dietrich

Marlene Dietrich face pot produced 2001. Marie Magdalene "Marlene" Dietrich (1901-1992) was a German and American actress and singer whose career spanned from the 1910s to the 1980s. Dietrich was known for her humanitarian efforts during World War II, housing German and French exiles, providing financial support and even advocating their American citizenship. Dietrich's face pot quote is "I do not wish to be disturbed" when she was known to often say tersely when she had retired to her trailer on set.

Martin Luther King

Martin Luther King face pot produced circa 2002. Martin Luther King Jr. (1929-1968) was an American Baptist minister and activist who was one of the most prominent leaders in the civil rights movement from 1955 until his assassination on April 4, 1968. King advanced civil rights for people of color in the United States through nonviolence and civil disobedience. King's face pot quote, "I have a dream", is title of a speech he delivered during the March on Washington for Jobs and Freedom on August 28, 1963. In the speech, King called for civil and economic rights and an end to racism in the United States.



Medusa

brown & blue colorways

prototype colorway

Medusa face pot produced circa 2005. In Greek mythology, Medusa was one of the three Gorgons. Medusa is generally described as a human female with living venomous snakes in place of hair; those who gazed into her eyes would turn to stone. Most sources describe her as the daughter of Phorcy and Ceto. Medusa was beheaded by the Greek hero Perseus, who then used her head, which retained its ability to turn onlookers to stone, as a weapon until he gave it to the goddess Athena to place on her shield. Medusa's face pot quote, "Never compare yourself to a goddess!", is a warning to anyone thinking to elevate themselves to godhood.



Merlin

Merlin face pot produced in a 2005 Guild Issue. The enchanter of Arthurian romance, Merlin was possibly based on a Welsh bard of the 6th century named Myrddin to whom a number of poems have been attributed. Geoffrey of Monmouth transformed Myrddin into Merlin the magician, trusted counselor of King Arthur. The wizard is later described bringing Stonehenge from Ireland and erecting it on Salisbury Plain and also arranging the conception of Arthur. Merlin's face pot quote, "Do not meddle in the affairs of wizards, for they are subtle and quick to anger.", is sage advice given to Frodo by the elf Gildor in Tolkien's book, *The Lord of the Rings*.



Michelle Obama

Michelle Obama prototype face pot produced in 2011. Michelle LaVaughn Robinson Obama (1964-) is an American attorney and author who served as the first lady of the United States from 2009 to 2017. Obama campaigned for her husband's presidential bid throughout 2007 and 2008, delivering a keynote address at the 2008 Democratic National Convention. After her husband's presidency, Michelle Obama's influence has remained high. In 2020, she topped Gallup's poll of the most admired woman in America for the third year running.



Miss Berry Claus

Miss Berry Claus face pot produced circa 2003. One of Santa and Mrs. Claus' identical twin daughters, Miss Berry Claus is an eager helper around the toy shop at the North Pole. Berry's face pot quote, "I'm nice", refers to the Christmas song *Santa Claus is Coming To Town*, and clearly tells us which of Santa's lists she is on.

Miss Liberty

Miss Liberty face pot produced circa 2001. The Statue of Liberty, also known as Miss Liberty, is a colossal sculpture on Liberty Island in New York Harbor. The copper statue, a gift from the people of France, is a figure of the Roman Goddess of Liberty. She holds a torch above her head with her right hand, and in her left hand carries a tabula ansata inscribed "July IV MDCCLXXVI". Miss Liberty's face pot quote, *God Bless America*, is an American patriotic song written by Irving Berlin in 1918.



Miss Merry Claus

Miss Merry Claus face pot produced circa 2003. One of Santa and Mrs. Claus' identical twin daughters, Miss Merry Claus is focused on her own interests and ideas, rarely participating around the toy shop at the North Pole. Merry's face pot quote, "I'm naughty", refers to the Christmas song *Santa Claus is Coming To Town*, and clearly tells us which of Santa's lists she is on.

Miss Soprano The Cat

Miss Soprano The Cat face pot produced circa 2004. Miss Soprano is a black and white tabby cat. Her face pot quote, "In the middle of a world that has always been a bit mad, the cat walks with confidence.", is a famous quote by Rosanne Amberson and expresses Miss Soprano's attitude perfectly.





Misty

Misty face pot produced in a grey colorway circa 2002. Misty is a cute little pony who wants nothing more than to make the farmer's children happy. Her face pot quote, "We will be friends until forever, just you wait and see", was said by Winnie the Pooh to Piglet and is a sentiment that Misty shares regarding those children.



Monique

Monique face pot produced 2002. In folklore, a mermaid is an aquatic creature with the head and upper body of a female human and the tail of a fish. Mermaids appear in the folklore of many cultures worldwide, including Europe, Asia, and Africa. Mermaids are sometimes associated with perilous events such as floods, storms, shipwrecks, and drownings. Monique is a brazen and assertive mermaid, pursuing any man or sailor who she encounters. Her face pot quote, "Hello Sailor!", is only her opening line.

Monuke

Monuke face pot produced circa 2002 for Save the Manatee, a non-profit organization dedicated to the conservation of manatees. Manatees are large, fully aquatic, mostly herbivorous marine mammals sometimes known as sea cows. Manatees inhabit the shallow, marshy coastal areas and rivers of the Caribbean Sea, the Gulf of Mexico, the Amazon, and West Africa. Their slow-moving, curious nature has led to violent collisions with propeller-driven boats and ships. Monuke's face pot quote, "Row, Row, Row your boat ...", comes from the nursery rhyme of the same name and makes water life safer for Monuke.



Mrey

Mrey face pot produced circa 2004. Mrey is an American Staffordshire Terrier. The breed has been bred for a stable temperament and adapted for hunting rodents and other vermin, for pursuing game, and for farm work, taking advantage of the breed's strength and courage. Her master often praises her by saying "Who's a good dog!"

Mrs. Bertie

Mrs. Bertie face pot produced in a black and white colorway at left and brown and white colorway at right circa 2002. Mrs. Bertie the bulldog is a British breed of dog of mastiff type. Bulldog's are a medium sized, muscular dog with large heads with a thick folds of skin around the face and shoulders. While often used as a symbol of ferocity and courage, modern bulldogs are generally friendly, amiable dogs. With her face pot quote of "I'll give you woof woof", Mrs. Bertie is responding to her husband Bertie's constant request for food.





Mrs. Frankie

Mrs. Frankie face pot produced circa 2005. Based on *Frankenstein*, the 1818 novel written by English author Mary Shelley, the Bride of Frankenstein was introduced in the sequel to the movie. Elizabeth Lavenza was an orphan child raised by Victor Frankenstein's family and later becomes Frankenstein's bride. Being an idealized character, she combines positive traits. Some of them are beauty, loyalty, and kindness. Obviously beyond being his bride, Mrs. Frankie is holding a baby Frankenstein and asking "Who's your Daddy?", possibly wondering where Frankenstein has gone.



Mrs. Santa



Mrs. Santa face pot produced circa 2002. Mrs. Claus, also known as Mrs. Santa Claus, is the wife of Santa Claus, the Christmas gift-bringer in Western Christmas tradition. She is known for making cookies with the elves, caring for the reindeer, and preparing toys with her husband. Mrs. Santa has just finished polishing Santa's boots and is preparing to hand them to him while she sings, "These boots are made for walking, and that's what they are going to do", the chorus from *These Boots Are Made for Walkin'*, a 1966 hit song recorded by singer Nancy Sinatra.

Muhammad Ali

Muhammad Ali face pot produced circa 2001. Muhammad Ali (1942-2016) was an American professional boxer and activist. Nicknamed "the Greatest", he is regarded as one of the most significant sports figures of the 20th century and is often regarded as the greatest heavyweight boxer of all time. "I'm the greatest thing that ever lived. I don't have a mark on my face and I upset Sonny Liston, and I just turned twenty-two years old," the exuberant new king of boxing's glamour division said after his stunning 1964 triumph.



Murgrieth

Murgrieth face pot produced circa 2001. The woolly mammoth is an extinct species of mammoth that lived during the Pleistocene until its extinction in the Holocene epoch. It was one of the last in a line of mammoth species. Its habitat was the mammoth steppe, which stretched across northern Eurasia and North America. The woolly mammoth coexisted with early humans, who used its bones and tusks for making art, tools, and dwellings, and hunted the species for food. In its day, the woolly mammoth was truly "The father of the plains".

Mygard

Mygard face pot produced circa 2002. Mermen, the male counterparts of the mythical female mermaids, are legendary creatures which are human from the waist up and fish-like from the waist down, but may assume normal human shape. Sometimes they are described as hideous and other times as handsome. Mygard's face pot quote, "Through the waves I rise", describes his ascension from his undersea dwelling place to dry land above.



Nancy Pelosi

Nancy Pelosi face pot prototype produced in 2010. Nancy Patricia Pelosi (1940-) is an American politician who served as the 52nd speaker of the United States House of Representatives from 2007 to 2011 and 2019 to 2023. A member of the Democratic Party, she was the first woman elected Speaker and lead a major political party in either chamber of Congress. She represented California's 11th congressional district in the House of Representatives since 1987. Pelosi is making a political joke with her face pot quote, "I banged Barrack".

Nanuk the Polar Bear

Nanuk the Polar Bear face pot produced circa 2002. The polar bear is a large bear native to the Arctic and surrounding areas. It the largest extant species of bear and land carnivore, with adult males weighing up to 1,800 pounds. The polar bear is white- or yellowish-furred with black skin and a thick layer of fat. The paws are large and allow the bear to walk on ice and paddle in the water. Nanuk's face pot quote, "All good things are wild and free", remind us to respect and protect nature and all of its fauna and flora.





Nellie

Nellie face pot produced in a 2003 limited edition for the Face Pot Team Tour. Nellie is among the largest existing land animals. Distinctive features of elephants include a long proboscis called a trunk, tusks, large ear flaps, pillar-like legs, and tough but sensitive skin. The trunk is used for breathing, bringing food and water to the mouth, and grasping objects. Tusks serve both as weapons and as tools for moving objects and digging. Nellie's face pot quote, "Not on your Nellie!", was a 1974 British sitcom.



Nelson Mandela

Nelson Mandela face pot prototype produced in 2010. Nelson Rolihlahla Mandela (1918-2013) was a South African anti-apartheid activist and politician who served as the first president of South Africa from 1994 to 1999. He was the country's first black head of state and the first elected in a democratic election. His government focused on dismantling the legacy of apartheid by fostering racial reconciliation. Mandela's face pot quote, "In my country we go to prison first and then become president", humorously describes his political career.

Nick and Dave

Nick and Dave face pot prototype produced in 2011. Nicholas Clegg (1967-) is a former politician who served as Deputy Prime Minister of the United Kingdom from 2010 to 2015 and as Leader of the Liberal Democrats from 2007 to 2015. David Cameron (1966-) is a British politician who served as Prime Minister of the United Kingdom from 2010 to 2016 and Leader of the Conservative Party from 2005 to 2016. The unlikely pair formed Britain's first coalition government in seven decades, with Liberal Democrat leader Clegg serving as the conservative Cameron's deputy.



Octavia

Octavia face pot produced circa 2001. An octopus is a soft-bodied, eight-limbed mollusk that is bilaterally symmetric with two eyes and a beaked mouth at the center of the eight limbs. The soft body can radically alter its shape, enabling octopuses to squeeze through small gaps. The siphon is used both for respiration and for locomotion, by expelling a jet of water. Octopuses are among the most intelligent of all invertebrates. Octavia is asking the scuba diver she has caught in her eight arms, "Shall we dance?"

Ollie

Ollie face pot produced circa 2003. With Stan Laurel, Oliver Norvell Hardy (1892-1957) was part of probably the most popular comedy team in motion picture history. Their typical routine involved a simple set-up, which was then complicated by their zany antics. Their films are marked by expert pantomime, well-defined character and special care taken with props. Their best-known films included the Academy Award-winning *The Music Box* (1933), *Fra Diavolo* (1933), *Sons of the Desert* (1934) and *Way Out West* (1937). Ollie's face pot quote, "That's another fine mess you've gotten me into, Stanley", is a common refrain that Ollie says to his partner Stan.



Panda

Panda face pot produced in a blue colorway in a 2001 House of Blues limited edition as a part of the 2001 Face Pots Team Tour. The giant panda is a bear species endemic to China characterized by its bold black-and-white coat and rotund body. With bamboo shoots and leaves making up more than 99% of its diet, the giant panda may also eat other grasses, wild tubers, or even meat in the form of birds, rodents, or carrion.

Patches

Patches face pot produced circa 2002. Patches, a darling little kitty, is terribly loved and spoiled as evidenced by her dainty collar with green heart charm and tinkling blue bell so you can always hear where she is. Her face pot quote is "There are hundreds of reasons for having a cat, but all you need is one.", a good reason to have a cat as a pet.



Patriotic Nellie

Patriotic Nellie face pot produced circa 2003. Patriotic Nellie is among the largest existing land animals. Distinctive features of elephants include a long proboscis called a trunk, tusks, large ear flaps, pillar-like legs, and tough but sensitive skin. The trunk is used for breathing, bringing food and water to the mouth, and grasping objects. Tusks serve both as weapons and as tools for moving objects and digging. Patriotic Nellie's face pot quote, "One Nation Under God", is heartfelt line from the United States' Pledge of Allegiance.



Paul face pot produced circa 2001. The walrus is a large marine mammal found in the Arctic Ocean and subarctic seas. Adult walrus have prominent tusks and whiskers, and considerable bulk. Walrus live mostly in shallow waters above the continental shelves, spending most of their lives on the sea ice. Walrus are relatively long-lived, social animals. Paul the Walrus' face pot quote, "kookookatchu", is from the lyrics of the 1967 Beatles' hit song *I Am the Walrus*. The phrase was written as "goo goo g'job", but fans transformed it to "Koo Koo Kachoo" by taking the pronunciation literally.

Paul McCartney

Paul McCartney face pot produced circa 2002. James Paul McCartney (1942-) is an English singer, songwriter and musician who gained worldwide fame with the Beatles, for whom he played bass guitar and shared primary songwriting and lead vocal duties with John Lennon. McCartney is known for his melodic approach to bass-playing, versatile range, and musical eclecticism. Paul's face pot quote, "Love is all you need", is the last line of the chorus in the Beatles 1967 hit *All You Need Is Love*.



Pirate Elephant face pot circa 2003. The elephant is among the largest existing land animals. Distinctive features of elephants include a long proboscis called a trunk, tusks, large ear flaps, pillar-like legs, and tough but sensitive skin. The trunk is used for breathing, bringing food and water to the mouth, and grasping objects. Tusks serve both as weapons and as tools for moving objects and digging. The Pirate Elephant's face pot is a quote from W. C. Fields, "Women are like elephants. I like to look at them but I wouldn't want to own one."

Plato

Plato face pot produced circa 2002. Plato (428 BC-348 BC) was an ancient Greek philosopher from the Classical period in Ancient Greece. Plato founded the Academy in Athens, a school where he taught the philosophical doctrines that become known as Platonism. His most famous contribution is the Theory of forms, which has been interpreted as advancing a solution to what is now known as the problem of universals. One of Plato's lasting quotes is "Those who are too smart to engage in politics are punished by those who are dumber."





President Clinton

President Clinton face pot circa 2001. William Jefferson Clinton (1946-) is an American politician who served as the 42nd president of the United States from 1993 to 2001. He previously served as governor of Arkansas from 1979 to 1981 and again from 1983 to 1992, and as attorney general of Arkansas from 1977 to 1979. Clinton's face pot quote, "It's the economy stupid", was a phrase coined by James Carville in 1992, when he was advising Bill Clinton in his successful run for the White House.



President George W. Bush

President George W. Bush face pot produced circa 2004. George Walker Bush (1946-) is an American politician who served as the 43rd president of the United States from 2001 to 2009, previously serving as the 46th governor of Texas from 1995 to 2000. At various points in his presidency, he was among both the most popular and unpopular presidents in U.S. history. Bush's face pot quote, "We will not tire, we will not falter, and we will not fail", was from a speech he gave on September 20, 2001, launching the United States' war on terror in response to the 911 terrorist attack.

President Jefferson

President Jefferson face pot produced circa 2003. Thomas Jefferson (1743-1826) was an American statesman, diplomat, lawyer, architect, philosopher, and Founding Father who served as the third president of the United States from 1801 to 1809. Jefferson was the Declaration of Independence's primary author. Following the Revolutionary War, Jefferson was the first United States secretary of state under George Washington and then the nation's second vice president under John Adams. Jefferson's face pot quote, "Honesty is the first chapter in the book of wisdom", is from a letter he wrote dated January 12, 1819.



President Jimmy Carter

President Jimmy Carter face pot produced circa 2007. James Earl Carter Jr. (1924-) is an American politician who served as the 39th president of the United States from 1977 to 1981. He served as the 76th governor of Georgia from 1971 to 1975, and as a Georgia state senator from 1963 to 1967. After leaving the presidency, Carter established the Carter Center to promote and expand human rights, earning him a Nobel Peace Prize in 2002. Carter's face pot quote, "America did not invent human rights. In a very real sense human rights invented America.", was said as he left office in 1981.

President Kennedy

President Kennedy face pot produced circa 2002. John Fitzgerald Kennedy (1917-1963) was an American politician who served as the 35th president of the United States from 1961 until his assassination in 1963. Kennedy served at the height of the Cold War and the majority of his work as president concerned relations with the Soviet Union and Cuba. He represented Massachusetts in both houses of the U.S. Congress prior to his presidency. Kennedy's face pot quote, "Ask not what America can do for you", is from his famous 1961 inaugural address upon becoming president of the United States.



President Lincoln

President Lincoln face pot produced circa 2004. Abraham Lincoln (1809-1865) was an American lawyer and statesman who served as the 16th president of the United States from 1861 until his assassination in 1865. Lincoln led the nation through the American Civil War and succeeded in preserving the Union, abolishing slavery, bolstering the federal government, and modernizing the U.S. economy. Lincoln's face pot quote, "If I were two-faced, would I be wearing this one?", is his reply to Douglas referencing his homeliness during the famous Lincoln-Douglas debates, when Douglas accused Lincoln of being two-faced.

President Nixon

President Nixon face pot produced circa 2002. Richard Milhous Nixon (1913-1994) was the 37th president of the United States from 1969 to 1974. He previously served as a representative and senator from California and was the 36th vice president from 1953 to 1961. As president, he led a reduction of U.S. involvement in the Vietnam War, detente with the Soviet Union and China, saw the first manned moon landings, and the establishment of the EPA. Nixon's face pot quote is "A man is not finished when he is defeated. He is finished when he quits".



President Reagan

President Reagan face pot produced in a 2004 limited edition for the Face Pot Team Tour. Ronald Wilson Reagan (1911-2004) was an American politician who served as the 40th president of the United States from 1981 to 1989. His presidency saw the American economy improve with a significant reduction of inflation and lower unemployment rate. Reagan's face pot quote, "Mr. Gorbachev, open this gate! Mr. Gorbachev, tear down this wall!", called for the General Secretary of the Communist Party of the Soviet Union, Mikhail Gorbachev, to open the Berlin Wall. This is the patriotic colorway.



President Roosevelt

President Roosevelt face pot produced circa 2004. Theodore Roosevelt Jr. (1858-1919), often referred to as Teddy, was an American politician, statesman, soldier, conservationist, naturalist, historian, and writer who served as the 26th president of the United States from 1901 to 1909. He previously served as the 25th vice president under President William McKinley from March to September 1901 and assumed the presidency after McKinley's assassination. One of Roosevelt's famous observations is his face pot quote: "Nine tenths of wisdom consists of being wise in time."

Prince Charles

Prince Charles face pot produced circa 2002. Charles III, born Charles Philip Arthur George (1948-) is King of the United Kingdom. As Prince of Wales he was the longest-serving heir apparent. At the age of 73, he became the oldest person to accede to the British throne upon the death of his mother, Elizabeth II, in September of 2022. Charles' face pot quote, "Monstrous Carbuncle", comes from a 1984 speech where he called a proposed extension to London's National Gallery at Trafalgar Square a monstrous carbuncle: "What is proposed is like a monstrous carbuncle on the face of a much-loved and elegant friend."



Pug



Pug face pot produced in a variety of colorways circa 2011. The Pug is a breed of dog with physically distinctive features of a wrinkly, short-muzzled face, and curled tail. The breed has a fine, glossy coat that comes in a variety of colors, most often fawn or black, and a compact, square body with well developed and thick muscles all over

the body. Pugs are known for being sociable and gentle companion dogs with an even-tempered and charming personality. The black and white pug's face pot quote, "Acquiring a dog may be the only opportunity a human ever has to choose a relative.", is a quote from Mordecai Wyatt Johnson, an American educator and pastor. The fawn pug's face pot quote is the short prayer, "Lord, let me be the person my dog thinks I am." The brown prototype colorway pug's face pot quote, "The pug is living proof that God has a sense of humor.", is a quote from Margo Kaufman, author of *Clara, the Early Years: The Story of the Pug Who Ruled My Life*.



Puss in Boots



Puss in Boots face pot produced circa 2007. Puss in Boots is the principal character of an Italian fairy tale that quickly spread throughout the rest of Europe. He is a cat who uses trickery and deceit to gain power, wealth, and the hand of a princess in marriage for his penniless and low-born master. The oldest written telling is by Italian author Giovanni Francesco Straparola, who included it in his *The Facetious Nights of Straparola* circa 1550. Puss in Boots' face pot quote is a joke by comedian Stephen Wright, "Curiosity killed the cat, but for a while I was a suspect."

Queen Elizabeth II



Queen Elizabeth II face pot produced circa 2001. Queen Elizabeth II, born Elizabeth Alexandra Mary, (1926-2022) was Queen of the United Kingdom from February 6, 1952 until her death in 2022. She was queen regnant of 32 sovereign states during her lifetime and her reign was the longest of any British monarch. Support for the monarchy remained consistently high throughout her lifetime as did her personal popularity. The Queen's face pot quote, "Rule Britannia", is a British patriotic song, originating from the 1740 poem *Rule, Britannia* by James Thomson and set to music by Thomas Arne.

Rabbit



Rabbit face pot produced by Kevin Francis Ceramics of Stoke-on-Trent, England, circa 2001. Wearing her favorite yellow bow collar and holding a newly hatched chick still in its egg, this cute rabbit is ready for Spring. The rabbit's "Somebunny Loves You" face pot quote is her sentiment directed both toward the chick and all who enjoy her company.

Reginald Shortduck

Reginald Shortduck face pot produced in a prototype trial colorway in 2003. Reginald Shortduck is the stage name of a fictitious Elvis Presley impersonator. A pair with Kenny Talklong, an Elvis impersonator performing in Chicago, Illinois, Kenny is singing "Stoke Rocks!" to a local audience in his favorite corner pub.



Rex The Collie

Rex The Collie face pot produced in a black and white coat or a brown and white coat circa 2003, as well as a white colorway. Collies form a distinctive type of herding dogs. Collies are medium-sized, fairly lightly-built dogs, with pointed snouts. Many types have a distinctive white color over the shoulders. Collies are very active and agile, and have a very strong herding instinct. Driven by this strong herding instinct, Rex is shouting "It's round up time!"



Ringo Starr

Ringo Starr face pot prototype produced in 2003. Richard Starkey (1940-), known professionally as Ringo Starr, is an English musician, singer, songwriter and actor who achieved international fame as the drummer for the Beatles. He wrote and sang the Beatles songs *Don't Pass Me By* and *Octopus's Garden*, and is credited as a co-writer of many others. Ringo's face pot quote, "Octopus's Garden", celebrates Ringo's song from the 1969 album *Abbey Road*. George Harrison said, "*Octopus's Garden* is Ringo's song. It's only the second song Ringo wrote, and it's lovely."



Rita the Diamond Cat

Rita the Diamond Cat face pot circa 2001. Rita is a spoiled but friendly household cat who loves wearing her pink diamond-studded collar. A derivation of Marilyn Monroe's famous line from *Gentlemen Prefer Blondes*, "Diamonds are a girl's best friend," her face pot quote, "Diamonds are a girls Lil' Treasures", says exactly how Rita feels about her collar.

Rod Stewart

Rod Stewart face pot prototype produced in 2023. Roderick David Stewart (1945-) is a British rock and pop singer and songwriter. With his distinctive raspy singing voice, Stewart is among the best-selling music artists of all time, having sold more than 120 million records worldwide. Rod's face pot quote has yet to be finalized.



Rommel

Rommel face pot produced circa 2001. Johannes Erwin Eugen Rommel (1891-1944) was a highly decorated German officer in World War I, and German field marshal during World War II. He served in the Wehrmacht of Nazi Germany and the army of Imperial Germany. His leadership of German and Italian forces in the North African campaign established his reputation as one of the ablest tank commanders of the war, earning him the nickname "The Desert Fox".



Rotty

Rotty face pot produced circa 2001. The Rottweiler is a breed of medium to large domestic dog. The dogs were known in German as Rottweiler Metzgerhund, meaning Rottweil butchers' dogs, because their main use was to herd livestock and pull carts laden with butchered meat to market. Although still used to herd stock in many parts of the world, Rottweilers are now also used as search and rescue dogs, guard dogs, and police dogs. Rotty awakens from his nap to ask his owner, "Did someone say walkies?"



Round Three

Round Three face pot produced in a 2001 Artist's limited edition. Rocky Marciano (1923-1969) was an American professional boxer who held the world heavyweight title from 1952 to 1956 and is the only heavyweight champion to finish his career undefeated. He is considered one of the greatest heavyweight boxers of all time. This boxer's face pot quote, "In the clearing stood a boxer and a fighter by the name", are lyrics from Paul Simon's *The Boxer*.

Roxie

Roxie face pot produced circa 2002. Parrots are birds of roughly 398 species found mostly in tropical and subtropical regions. The greatest diversity of parrots is in South America and Australasia. Characteristic features of parrots include a strong, curved bill, an upright stance, strong legs, and clawed zygodactyl feet. Many parrots are vividly colored, and some are multi-colored. Roxie's face pot quote, "Remarkable bird id'nit, Squire? Lovely plumage", said the pet shop owner to the dissatisfied customer regarding a Norwegian Blue parrot's health from Monty Python's Flying Circus 1969 *The Dead Parrot Sketch*.



Rudy Guiliani

Rudy Guiliani face pot produced circa 2002. Rudolph William Louis Giuliani (1944-) is an American politician and lawyer who served as the 107th mayor of New York City from 1994 to 2001. After advising him during his 2016 campaign and early administration, Giuliani joined President Donald Trump's personal legal team in April 2018. Rudy said this face pot quote, "New York is still here. We've suffered terrible losses and we will grieve for them, but we will be here tomorrow and forever", shortly after the 911 terrorist attack on New York City.

Rwanda

Rwanda face pot produced circa 2002 for The Gorilla Foundation. Gorillas are herbivorous, predominantly ground-dwelling great apes that inhabit the tropical forests of equatorial Africa. They tend to live in troops, with the male leader being called a silverback. Rwanda's face pot quote, "When elephants fight, it is the grass that suffers", is an African proverb that means the weak get hurt in conflicts between the powerful.





Salvador Dali

Salvador Dali face pot produced circa 2001. Salvador Domingo Felipe Jacinto Dali i Dominech (1904-1989) was a Spanish surrealist artist renowned for his technical skill, precise draftsmanship, and the striking and bizarre images in his work. Dali's artistic repertoire included painting, graphic arts, film, sculpture, design and photography. Dali's life and work have been an important influence on pop art, other Surrealists, and contemporary artists. In his face pot quote, Dali defends his creativity: "The difference between Dali and a mad man is that Dali is not mad!"



Samantha

Samantha face pot produced circa 2001. Cocker Spaniels are dogs belonging to two breeds of the spaniel dog type: the American Cocker Spaniel and the English Cocker Spaniel, both of which are commonly called simply Cocker Spaniel in their countries of origin. Cocker Spaniels were originally bred as hunting dogs in the UK, with the term "cocker" deriving from their use to hunt the Eurasian woodcock. When the breed was brought to the United States, it was bred to hunt the American woodcock. Samantha is a pampered lady who sighs, "It's not easy being the queen", because she clearly runs her household.

Santa - version 1



Santa face pot version 1 produced circa 2000. Santa Claus is a legendary figure who is said to bring gifts during the late evening and overnight hours on Christmas Eve to nice children, and either coal or nothing to naughty children, with the aid of flying reindeer who pull his sleigh through the air. Santa is generally depicted as a portly, jolly, white-bearded man, often with spectacles, wearing a red coat with white fur collar and cuffs, white-fur-cuffed red trousers, red hat with white fur, and black leather belt and boots, carrying a bag full of gifts for children. In the 2000 red colorway and Artists Edition white colorway face pots at the right, Santa is exclaiming, "Merry Christmas 2000 Ho, Ho, Ho". In the 2001 Charter Guild issue at left, Santa is wishing everyone "Merry Christmas Crackpots".



Santa - version 2

Santa 2002 Guild Issue with Santa exclaiming "Welcome to your club!" to all Club members.



Santa 2001 general issue with Santa asking "Have you been Naughty or Nice", referring to the Christmas song *Santa Claus is Coming To Town*.

Santa - version 3



Santa 2002 general issue with Santa is asking "Have you been good or bad", referring to the Christmas song *Santa Claus is Coming To Town*.



Santa 2003 Guild Issue with Santa wishing everyone a very "Merry Christmas".



Santa 2003 limited edition with Santa is singing "You better not pout, you better not cry", lyrics from the Christmas song *Santa Claus is Coming To Town*.

Santa - version 4



Santa 2003 general issue with Santa is singing "You better not pout, you better not cry", lyrics from the Christmas song *Santa Claus is Coming To Town*.



Santa face pot version 5 produced circa 2006. Santa face pot quote, "Christmas is a state of mind", is a quote from President Calvin Coolidge: "Christmas is not a time or a season, but a state of mind. To cherish peace and goodwill, to be plenteous in mercy, is to have the real spirit of Christmas."

Santa - version 5

Sarah Palin

Sarah Palin pot produced circa 2010. Sarah Louise Palin (1964-) is an American politician, commentator, author, and reality television personality who served as the ninth governor of Alaska from 2006 to 2009. She was the 2008 Republican vice presidential nominee alongside U.S. Senator John McCain. Since her resignation as governor in 2009, she has campaigned for the fiscally conservative Tea Party movement. Palin's face pot quote, "Get your tits out for the tea party", demonstrates her full frontal commitment to the Republican Tea Party.



Satchmo pot produced circa 2002. Louis Daniel Armstrong (1901-1971), nicknamed "Satchmo", was an American trumpeter and vocalist. He was among the most influential figures in jazz. His career spanned five decades and several eras in the history of jazz. Armstrong was a native son of New Orleans and loved red beans and rice so much so, that he often signed his letters "Red beans and rice yours."

Satchmo

Scooby

Scooby pot produced in a 2002 limited edition for Berns and Allen. The existing species of sea turtles are the flatback, green, hawksbill, leatherback, loggerhead, Kemp's Ridley, and olive Ridley, most are listed as endangered or threatened under the Endangered Species Act. Save The Sea Turtles International is focused on making a positive effort for sea life and the international community. Scooby's face pot quote, "Making Trax", refers to both the tracks that turtles leave in the sand and the web site Turtle Trax, which is devoted to the preservation of sea turtles.



Scrooge

Scrooge pot produced circa 2003. Ebenezer Scrooge is the elderly man with a heart of stone from Charles Dickens' novel *A Christmas Carol*. Probably Dickens' best known character, the miserly Scrooge is visited by the ghost of his former partner, Jacob Marley, who sends three more ghosts of Christmas in hopes of reforming Scrooge's heartless and penny-pinching ways. After visits by the three ghosts on Christmas Eve, Scrooge finds compassion in his



Sean the Leprechaun

Sean the Leprechaun pot produced circa 2002. A leprechaun is a diminutive supernatural being in Irish folklore, classed by some as a type of solitary fairy. They are usually depicted as little bearded men, wearing a green coat and hat, who partake in mischief. In more recent times, they have been depicted as shoe-makers who have a hidden pot of gold at the end of the rainbow. With his Irish first name, Sean is an expert shoe maker.

Shakespeare

Shakespeare pot produced circa 2001. William Shakespeare (1564-1616) is considered the greatest dramatist the world has known, as well as the finest poet who has written in the English language. No other writer's plays have been produced so many times in so many countries, and no poet's verse has been so widely read in so many lands. Shakespeare's face pot quote, "To be or not to be?", is the opening phrase of a speech given by Prince Hamlet in Shakespeare's play *Hamlet*. In the speech, Hamlet contemplates death and suicide.



Sherlock Holmes

Sherlock Holmes pot produced circa 2001. From Sir Arthur Conan Doyle's imagination comes this most accomplished detective, Sherlock Holmes. The world's first consulting detective, Holmes, along with his eager narrator Dr. Watson, was uncanny in his ability to ferret out clues and deduce the perpetrator of some dastardly deed. Having solved thousands of cases, Holmes is constantly stopping to investigate some vital clue in the case he is pursuing. "Elementary my dear Watson", is Holmes' famous line often spoken to his partner Dr. Watson.



Spiro

Spiro face pot in two colorways produced circa 2001. The English Springer is a breed from the Spaniel group used for flushing and retrieving game. It is an affectionate, excitable breed descended from the Norfolk or Shropshire Spaniels of the mid-19th century. The term Springer comes from the hunting role, where the dog would flush (spring) birds into the air. Spiro's face pot quote, "Who's a good boy?", is all the praise he needs from his master.





Split Decision

Split Decision face pot produced circa 2001 featuring Al Gore on the left and George W. Bush on the right. In the December 12, 2000 Bush v. Gore legal case, the Supreme Court reversed an order by the Florida Supreme Court for a manual recount of that state's U.S. presidential election ballots. The 5-4 decision awarded Florida's 25 Electoral College votes to George W. Bush, thereby ensuring his victory over Al Gore in the 2000 presidential election. The scales of justice is the face pot quote of this pot.



St Bertie

St Bertie face pot prototype trial colorway produced in 2001. Bertie the bulldog is a British breed of dog of mastiff type. Bulldog's are a medium sized, muscular dog with large heads with a thick folds of skin around the face and shoulders. While often used as a symbol of ferocity and courage, modern bulldogs are generally friendly, amiable dogs. With his face pot quote, "Heaven goes by favour. If it went by merit, you would stay out and your dog would go in", is a famous quote of Mark Twain's.

Stan

Stan face pot produced circa 2003. Stan Laurel (1890-1964), born Arthur Stanley Jefferson, was part of probably the most the popular comedy team in motion-picture history. Teaming with Oliver Hardy in 1927, their typical routine involved a simple set-up, which was then complicated by their zany antics. Their best-known films included the Academy Award-winning *The Music Box* (1933), *Fra Diavolo* (1933), *Sons of the Desert* (1934) and *Way Our West* (1937). Stan's face pot quote, "You can lead a horse to water, but a pencil must be lead", is a famous joke of his spoken to Oliver Hardy.



Sue and Joey Puffin

Sue and Joey Puffin face pot produced circa 2004. Puffins are pelagic seabirds that breed in large colonies on coastal cliffs or offshore islands, nesting in crevices among rocks or in burrows in the soil. Their short wings are adapted for swimming with a flying technique underwater. In the air, they beat their wings rapidly in swift flight, often flying low over the ocean's surface. Mama Sue and baby Joey's face pot quote, "Remember son - A bird doesn't sing because it has an answer, it sings because it has a song", a quote from American poet and civil rights activist, Maya Angelou, is excellent advice from a mother to her son.

Sumatra

Sumatra face pot produced circa 2001. The Bengal tiger ranks among the biggest wild cats alive today. Today, it is threatened by poaching, loss and fragmentation of habitat, and was estimated at comprising fewer than 2,500 wild individuals by 2011. The Bengal tiger's range covers India, Bangladesh, Nepal, Bhutan, and southwestern China. India's tiger population was estimated at 3,000 individuals in 2018. Born of royal lineage, Sumatra is known as "The Gentle Prince".



Sunshine the Poodle

Sunshine the Poodle face pot in two colorways produced circa 2002. The Poodle is a French breed with a distinctive thick, curly coat that comes in many colors. Poodles are active and intelligent, and learn quickly from their owners. Sunshine's face pot quote is "Voulez-vous coucher avec mois cest soir?", from the 1974 hit song of the same name sung by Lady Marmalade, translates as "Do you want to sleep with me this evening?"





Susie Cooper

Susie Cooper face pot produced circa 2006. Susan Vera Cooper (1902 - 1995) was a prolific English ceramic designer working in the Stoke potteries from the 1920s to the 1980s. In 1922 she joined the ceramics firm A. E. Gray & Co. Ltd. In 1929 she started her own pottery, Susie Cooper Potteries. She worked for many other pottery firms over the next several decades. In 1940 she was awarded Royal Designer for Industry by the Royal Society of Arts. Susie's face pot quote, "It's Deco time", refers to her great influence on the Art Deco movement of the early 1900s.



Sydney The Shepard

Sydney The Shepard face pot in two colorways produced circa 2001. The German Shepherd is a German breed of working dog originally bred as a herding dog for herding sheep. It has since been used in many other types of work, including disability assistance, search-and-rescue, and police work. Sydney's face pot quote, "to watch over us", recognizes the Shepard's duty to watch over and protect those in its care.



Taj

Taj face pot produced circa 2002. Elephants are the largest existing land animals. Distinctive features include a long trunk, tusks, large ear flaps, pillar-like legs, and tough but sensitive skin. The trunk is used for breathing, bringing food and water to the mouth, and grasping objects. Tusks serve both as weapons and as tools for moving objects and digging. Taj's face pot quote, "An elephant is a kindly bloke", is from the "Elephant Poem", an offers a wonderful description of these gentle giants.



Tala

Tala face pot produced circa 2002. The wolf is a large canine native to Eurasia and North America. The wolf's fur is usually mottled white, brown, gray, and black, although subspecies in the arctic region may be nearly all white. Living in matriarchal packs, as the senior female of her group, Tala's face pot quote, "Leader of the Pack", reminds us she is indeed the leader of her pack.



Tatanka Lyotake



Tatanka Lyotake face pot produced circa 2002. Sitting Bull (1837-1890), known as Tatanka Iyotake, was a Hunkpapa Lakota leader who led his people during years of resistance against United States government policies. He was killed by Indian agency police on the Standing Rock Indian Reservation during an attempt to arrest him. Tatanka's face pot quote, "It is not necessary for eagles to be crows", is a line from a famous Sitting Bull quote: "If the Great Spirit had desired me to be a white man he would have made me so in the first place. He put in your heart certain wishes and plans, and in my heart he put other and different desires. It is not necessary for eagles to be crows."

The Arundel Town Crier

The Arundel Town Crier prototype colorway face pot produced in 2002. The English village of Arundel has had town criers dating back centuries. "Oh Yeah! Oh Yeah! Oh Yeah!" On hearing this call, local townsfolk rush to the square since these words heralded the arrival of the Town Crier. With his large bell to attract attention, this important fellow made his public announcements, standing before the crowd resplendent in official robes and cocked hat.





The Demon

prototype colorways at left

general issue

The Demon face pot produced circa 2006. A demon is a malevolent supernatural entity. Historically, belief in demons occurs in religion, occultism, literature, fiction, mythology, and folklore. Belief in demons probably goes back to the Paleolithic age, stemming from humanity's fear of the unknown, the strange and the horrific. Belief in demons remains an important part of many modern religions and occultist traditions. Demons are still feared largely due to their alleged power to possess living creatures. The Demon's face pot quote, "Don't let me get possessive", is a warning to innocents that get in his way.



The Devil

prototype color trial

Artists Edition
flambé limited edition

The Devil face pot produced in 2006. The Devil is the personification of evil as it is conceived in various cultures and religious traditions. Jeffrey Burton Russell states that the different conceptions of the devil can be summed up as a principle of evil independent from God, an aspect of God, a created being turning evil (such as a fallen angel), and a symbol of human evil.

The Artists Edition Devil's face pot quote, "Please allow me to introduce myself", is the first line of the 1969 Rolling Stones song *Sympathy for the Devil*. The flambé Devil's face pot quote, "Going Down!", is asking who will be joining the Devil in Hell.



The Mummy

general issue

limited edition

The Mummy face pot produced circa 2004. Resurrected mummies have been used as a creature of horror and dread for hundreds of years. This Mummy's face pot quote, "I want my mummy!", is a comical twist on the scary appearance of the mummy.



The Shaman

The Shaman face pot produced circa 2003. Shamanism is a religious practice that involves a shaman interacting with the spirit world through altered states of consciousness in order to direct spiritual energies into the physical world for the purpose of healing, divination, or to aid in another way. This shaman's face pot quote, "We do not inherit the Earth from our Ancestors, we borrow it from our children", is a Native American proverb.





The Showgirl

limited edition for Face Pot Team Tour

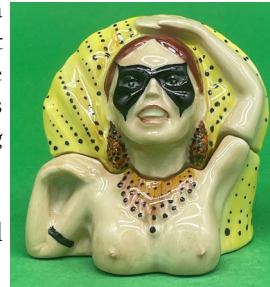
general issue

The Showgirl face pot produced in 2005. A showgirl is a female performer in a theatrical revue who wears an exotic and revealing costume and in some shows may appear topless. Showgirls are usually dancers, sometimes performing as chorus girls, burlesque dancers or fan dancers, and many are classically trained with skills in ballet. This Vegas showgirl whispers in our ear as a reminder:

"What happens in Vegas, stays in Vegas!", a marketing slogan used since 2000 that intentionally communicates complete freedom, meaning when you come to Las Vegas, you can do anything and be anything you want to be.



prototype color trial



The Warlock

general issue

prototype color trial

The Warlock face pot produced circa 2004. A warlock is a male practitioner of witchcraft. The word warlock derives from the Old English waeloga, which meant "breaker of oaths" or "deceiver", and was given special application to the devil around 1000. In early modern Scots, the word came to be used as the male equivalent of witch. The Warlock's face pot quote, "Be very afraid!", is a dire warning to any who anger the warlock.



The Werewolf

prototype color trial

general issue

The Werewolf face pot produced 2006. In folklore, a werewolf is an individual who can shape-shift into a wolf, either purposely or after being placed under a curse or affliction, with the transformations occurring on the night of a full moon. The werewolf is a widespread concept in European folklore, existing in many variants, which are related by a common development of a Christian interpretation of underlying European folklore developed during the medieval period. From the early modern period, werewolf beliefs also spread to the New World with colonialism. This werewolf's face pot quote, "A gentleman is simply a patient wolf", is often attributed to Lana Turner, an American actress from the mid-20th century. It suggests that a gentleman, like a wolf, is strong and assertive, but is able to control his impulses and act with restraint and patience. It implies that a true gentleman is both powerful and self-controlled.





The Wizard — version 1

The Wizard face pot version 1 produced circa 2004. A wizard is someone who uses or practices magic derived from supernatural, occult, or arcane sources. Wizards enjoy a rich history in mythology, legends, fiction, and folklore. This Wizard's face pot quote reminds all who don't already know: "A wizard is never late... nor is he early. He arrives precisely when he means to." From Tolkien's *The Lord of the Rings*, these words uttered by Gandalf the Grey in retort to young Frodo's cheeky greeting as the wizard enters Hobbiton on Bilbo's 111th birthday.

The Wizard — version 2

The Wizard face pot version 2 produced as the 2007 Guild Issue. A wizard is someone who uses or practices magic derived from supernatural, occult, or arcane sources. Wizards enjoy a rich history in mythology, legends, fiction, and folklore. This Wizard's face pot quote reminds all who don't already know: "A wizard is never late... nor is he early. He arrives precisely when he means to." From Tolkien's *The Lord of the Rings*, these words uttered by Gandalf the Grey in retort to young Frodo's cheeky greeting as the wizard enters Hobbiton on Bilbo's 111th birthday.



Toad

general issue

limited edition

Toad face pot produced circa 2004. Toad is a common name for certain frogs, especially of the family Bufonidae, that are characterized by dry, leathery skin, short legs, and large bumps covering the parotoid glands. A distinction between frogs and toads is not made in scientific taxonomy, but is common in popular culture, in which toads are associated with drier, rougher skin and more terrestrial habitats.

The general issue toad's face pot quote is "I'm toadally yours!", a very friendly message. The limited edition blue colorway toad is encouraging anyone to lick his back with his "Lick Me" face pot quote. People often get high from licking the back of a toad.



Tony Blair

Tony Blair face pot produced circa 2001. Anthony Charles Lynton Blair (1953-) is a British politician who served as Prime Minister of the United Kingdom from 1997 to 2007 and Leader of the Labour Party from 1994 to 2007. As prime minister, many of his policies, referred to as Blairism, reflected the Third Way political philosophy. Blair's face pot quote, "Education, education, education", comes from his May, 2001, speech on education in the UK.

Toucan

Toucan face pot produced circa 2007. Toucans are brightly marked and have large, often colorful bills. They make their nests in tree hollows and holes excavated by other animals such as woodpeckers. Toucans are usually found in pairs or small flocks, and do not migrate. They sometimes fence with their bills and wrestle, which may be to establish dominance hierarchies. This toucan's face pot quote, "A forest bird never wants a cage.", is from Henrik Johan Ibsen, a Norwegian playwright, theater director, and poet.



Tyke



Tyke face pot produced circa 2001. Triceratops is a genus of chasmosaurine ceratopsian dinosaur that lived during the late Maastrichtian age of the Late Cretaceous period, about 68 to 66 million years ago in what is now western North America. Bearing a large bony frill and three horns on the skull, triceratops is one of the most recognizable of all dinosaurs. Tyke's face pot quote, "Did the earth move for you", comes from Ernest Hemingway's *For Whom the Bell Tolls*, when the hero and his lover are describing the intensity of their sexual pleasure. It also describes the actual moving of the ground when any large dinosaur walks nearby.

Uncle Sam

Uncle Sam face pot produced circa 2001. Uncle Sam is the jocular name and personage given to the government of the United States. Uncle Sam is often depicted as a tall, thin man having a white beard and wearing a blue tailcoat, red-and-white-striped trousers, and a tall hat with a band of stars. Over the years he has become recognized worldwide as the United States' national symbol. Uncle Sam has also developed notoriety for his appearance in military propaganda, popularized by a famous 1917 World War I recruiting poster by J.M. Flagg in which he says "I WANT YOU".



Vic Schuler

Vic Schuler face pot circa 2001. Victor Hugo Schuler (1918-200x) had a lifelong interest in British history and antiques. His 40-year obsession however was collecting Toby jugs. He had a stall on Saturdays at the Portobello Road Market in London and was the recognized world expert on antique Toby jugs, writing two books on the topic. Vic's face pot quote, "Toby or not Toby", shows him contemplating the purchase of another exceptional antique Toby jug.



Vincent Van Gogh

Vincent Van Gogh face pot produced circa 2002. Vincent Willem van Gogh (1853-1890) was a Dutch Post-Impressionist painter who posthumously became one of the most famous and influential figures in Western art history. In a decade, he created about 2,100 artworks, including around 860 oil paintings. Not commercially successful in his career, he struggled with severe depression and poverty, which eventually led to his suicide at age thirty-seven. Van Gogh's face pot quote, "Keep your love of nature, for that is the true way to understand art more and more", is a famous quote of his.



William & Catherine

William & Catherine prototype face pot produced in 2012. William Arthur Philip Louis (1982-) is the heir apparent to the British throne. William became Duke of Cornwall and Duke of Rothesay following his father's accession to the throne on September 8, 2022. The following day, he was made Prince of Wales, a title reserved for the heir apparent of the monarch, and Catherine became Princess of Wales. The Royal wedding was on April 29, 2011 and the couple have three children: Prince George, Princess Charlotte, and Prince Louis. Their face pot quote, "May her love watch over you", is a heartfelt sentiment to bless the newlyweds.



Zhen Zhen

Zhen Zhen face pot produced circa 2001. The giant panda is a bear species endemic to China. It is characterized by its bold black-and-white coat and rotund body. The name "giant panda" is sometimes used to distinguish it from the red panda. Giant pandas prefer bamboo shoots and leaves, but will eat other grasses, wild tubers, or even meat in the form of birds, rodents, or carrion. Wanting to make sure you remember her, Zhen Zhen's face pot quote is simply her name.



prototype color trial



general issue

Zombie



Zombie face pot produced circa 2005. A zombie is a mythological undead corporeal revenant created through the reanimation of a corpse. Zombies are most commonly found in horror and fantasy genre works. The term comes from Haitian folklore, in which a zombie is a dead body reanimated through various methods, most commonly magical practices in religions like Vodou. Zombies are known to crave human flesh as is evident in this face pot's quote, "I bet you're delicious!"

Kevin Francis Face Pot List

<u>Face Pot Name</u>	<u># Made</u>	<u>Introduced</u>	<u>Retired</u>
Admiral Lord Nelson	151	2002	2005
Albert Einstein	599	2000	2006
Albert Einstein - House of Blues	18	2001	2001
Alsation Sydney	400		2007
American Bald Eagle	180	2001	2005
American Golden Eagle	286	2001	2003
American Indian	154	2002	2005
Angel	668	2001	2003
Angel purple Guild Issue	43	2001	2001
Arundal Town Crier red	50	2002	2002
Arundal Town Crier blue	50	2002	2002
Arundal Town crier blue ginger hair	10	2002	2002
Arundal Town Crier red ginger hair	6	2002	2002
Basset Hound B & G	50	2003	2005
Basset Hound Fred	120	2003	2007
Beafeater Alfred white hair	402	2001	2001
Beafeater brown hair	82	2002	2003
Beafeater - House of Blues	6	2002	2002
Bear Honey UK	151	2001	2007
Bear UK	85	2001	2007
Benny Hill	544	2000	2001
Benny Hill green	27	2001	2001
Billy Bunter - prototype	20	2003	2003
Bluebird - Buzzer Off	36	2006	2006
Bluebird - Don't Ask	24	2006	2006
Bluebird - Blues Brothers	6	2006	2006
Bob Marley	50	2012	2012
Bob Marley - Blues Brothers	6	2012	2012
Bob Marley - Artists Edition	7	2012	2012
Bobby Moore - UK Club exclusive	66	2002	2003
Boxer Emray brindle	76	2006	2007
Boxer Emray NAL Release white	46	2006	2007
Boy George - Guild Issue	62	2006	2006
Bride of Frankenstein	44	2005	2007
Bride of Frankenstein - Blues Brothers	6	2005	2005
Bride of Frankenstein NAL	70	2005	2007
Buddha	241	2002	2005

<u>Face Pot Name</u>	<u># Made</u>	<u>Introduced</u>	<u>Retired</u>
Admiral Lord Nelson	151	2002	2005
Albert Einstein	599	2000	2006
Albert Einstein - House of Blues	18	2001	2001
Alsation Sydney	400		2007
American Bald Eagle	180	2001	2005
American Golden Eagle	286	2001	2003
American Indian	154	2002	2005
Angel	668	2001	2003
Angel purple Guild Issue	43	2001	2001
Arundal Town Crier red	50	2002	2002
Arundal Town Crier blue	50	2002	2002
Arundal Town crier blue ginger hair	10	2002	2002
Arundal Town Crier red ginger hair	6	2002	2002
Basset Hound B & G	50	2003	2005
Basset Hound Fred	120	2003	2007
Beafeater Alfred white hair	402	2001	2001
Beafeater brown hair	82	2002	2003
Beafeater - House of Blues	6	2002	2002
Bear Honey UK	151	2001	2007
Bear UK	85	2001	2007
Benny Hill	544	2000	2001
Benny Hill green	27	2001	2001
Billy Bunter - prototype	20	2003	2003
Bluebird - Buzzer Off	36	2006	2006
Bluebird - Don't Ask	24	2006	2006
Bluebird - Blues Brothers	6	2006	2006
Bob Marley	50	2012	2012
Bob Marley - Blues Brothers	6	2012	2012
Bob Marley - Artists Edition	7	2012	2012
Bobby Moore - UK Club exclusive	66	2002	2003
Boxer Emray brindle	76	2006	2007
Boxer Emray NAL Release white	46	2006	2007
Boy George - Guild Issue	62	2006	2006
Bride of Frankenstein	44	2005	2007
Bride of Frankenstein - Blues Brothers	6	2005	2005
Bride of Frankenstein NAL	70	2005	2007
Buddha	241	2002	2005

